



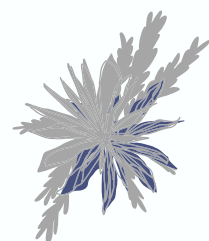
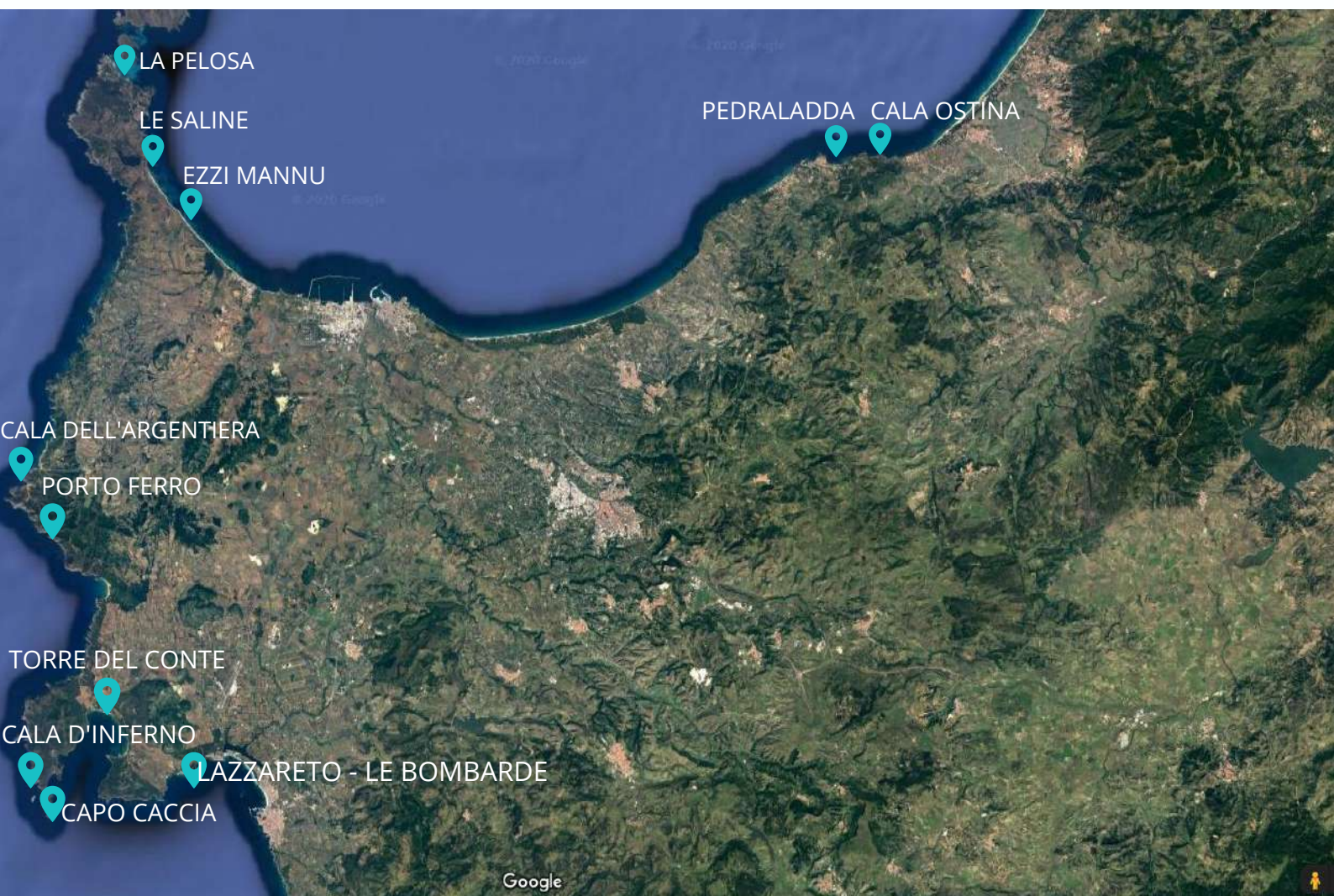
NAUTICA ASSISTANCE
YACHT AGENTS & SUPPLIERS

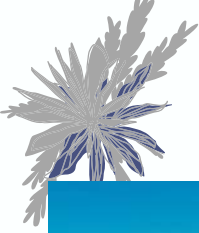
SARDINIA
CORSICA
CARIBBEAN

SUGGESTED BEACHES & ANCHORAGES



LA MADDALENA AREA





CALA OSTINA

A few kilometres beyond Castelsardo, a small road leads to the charming Cala Ostina, the inlet into which the homonymous stream flows, among impending trachyte rocks which edge the sandy arc of the small beach, washed by crystalline waters.

 40° 54' 55.417" N
8° 44' 19.093" E



NO LUXURY BEACH
CLUB IN SITE



PEDRALADDA

The beach located on the village of Castelsardo offers fantastic colour contrasts between the blue sea and the bright colours of the beach, behind which stands the setting of the trachytic rock overlooking the castle.

 40° 54' 46" N
8° 43' 17" E



NO LUXURY BEACH
CLUB IN SITE



EZZI MANNU

Ezzi Mannu beach extends for quite a distance and to the North connects to Le Saline beach in Stintino, and to the South with the Pilo pool and then Porto Torres. The beach covers about 4 km of coast and varies in width from between 20-40m.

 40° 52' 34.108" N
8° 15' 55.591" E



NO LUXURY BEACH
CLUB IN SITE



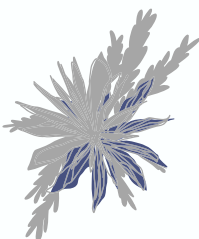
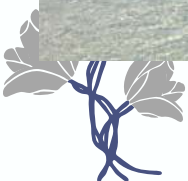
LE SALINE

The Beach of Le Saline is far about 2-3 kilometres from Stintino. The beach name Le Saline derives by the salt works located here that was run by the monks of Santa Maria di Tergu. The beach is a long stretch of very small crushed smoothed white stones (as grains of rice). The color of the sea is blue, clear and transparent.

 40° 54' 40" N
8° 13' 57" E



NO LUXURY BEACH
CLUB IN SITE





LA PELOSA

One of the most renowned beach in Sardinia. A breathtaking sandy white beach with crystal water overlooking the famous Pelosa and Falcone Towers. Just in front of it rises the Asinara island, ex penitentiary and now park, which has become the destination of numerous tourists.



40°57'56.5"N
8°12'34.4"E



NO LUXURY BEACH
CLUB IN SITE



CALA DELL'ARGENTIERA

Cala dell'Argentiera looks out onto an evocative scenery of manufacturing archaeology, formed by the Argentiera mine buildings, which over the centuries exploited the area for its rich lead, silver and zinc deposits. The mining village, closed in 1962, further amplifies the motionless atmosphere where time stands still, of this beautiful cove, that makes the shape of an arc covered by a mixture of sand, gravel and mineral dusts



40°44'27.3"N
8°08'36.1"E



NO LUXURY BEACH
CLUB IN SITE



PORTO FERRO

Large free beach, situated on the border between Alghero and Sassari, bordered by large dunes. It is located near the Baratz Lake, the only natural lake in Sardinia and valuable nature area. A path connects the beach to the lake area. Beaten by Mistral winds, the beach is a favored by surfers.



40° 40' 55.920" N
8° 12' 18.061" E



NO LUXURY BEACH
CLUB IN SITE



CALA D'INFERNO

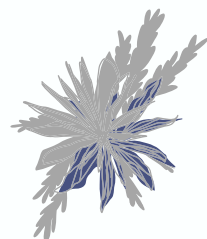
In the area of Capo Caccia, along the Riviera del Corallo, we find the picturesque Cala Inferno surrounded by high rocky ridges. Part of Porto Conte Natural reserve, the beach is very small, characterized by the presence of a rocky and stony, with little coarse sand and a light golden color. The crystal clear sea is a turquoise color iridescent, with a backdrop characterized by pebbles and sand, medium deep

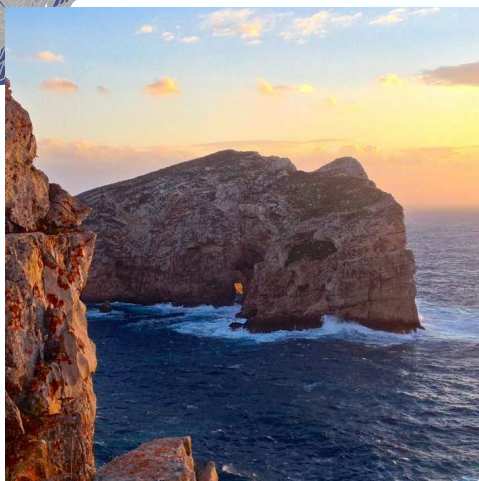


40° 34' 45.412" N
8° 9' 18.943" E



NO LUXURY BEACH
CLUB IN SITE





CAPO CACCIA

Capo Caccia is the S tip of a long, narrow and massive peninsula bordered by cliffs. It is characteristic by its dark color and its 169 m high cliff, dominated by a lighthouse beacon which is visible up to 34 NM, white tower on white house with two floors. An old semaphore is 0.4 NM, N lighthouse on the W shore. With Punta Giglio, it closes the gulf of Porto Conte. It is part of the AMP Capo Caccia / I. Piana. On the site of Capo Caccia, there is the famous Nereo Cave.



40°33.63 N,
8°09.82 E



NO LUXURY BEACH
CLUB IN SITE



TORRE DEL CONTE

Anchorage can be taken in 6 to 20 m, off torre Nuova, between Torre Nuova and Porto Conte marina.



40°35'48.9"N
8°12'38.2"E



NO LUXURY BEACH CLUB IN SITE



LAZZARETO - LE BOMBARDE

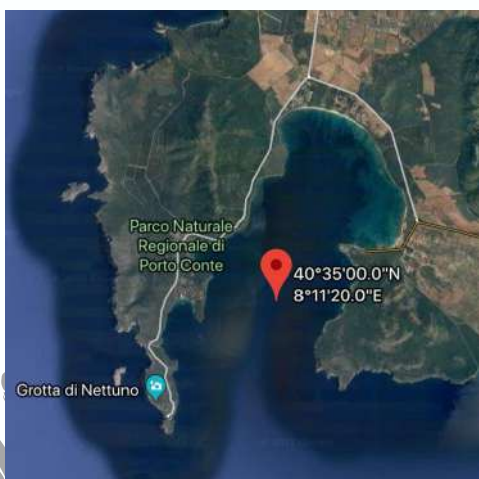
Spanish tower Lazzaretto (XVII century) stands on the right and low rocky promontory overwhelmed by low cliffs, bordering, S, Lazzaretto cala. Anchor in 14 m off Lazzaretto and Le Bombarde beach, which are the most enchanting ones of the NW coast. They have fine white sand and surrounded by dark red volcanic rocks and Mediterranean maquis.



40°34'47.2"N
8°15'17.9"E



NO LUXURY BEACH
CLUB IN SITE



ALGHERO BAY



40°35'00.0"N
8°11'20.0"E



NAUTICA ASSISTANCE
YACHT AGENTS & SUPPLIERS

SARDINIA
CORSICA
CARIBBEAN



NA AGENCY

+39 0789 57607 - info@nayacht.com

WWW.NAYACHT.COM



NAUTICA ASSISTANCE
YACHT AGENTS & SUPPLIERS

SARDINIA
CORSICA
CARIBBEAN