



**NAUTICA ASSISTANCE**  
YACHT AGENTS & SUPPLIERS

SARDINIA  
CORSICA  
CARIBBEAN

SUGGESTED ANCHORAGES



SUGGESTED ANCHORAGES

E COAST SARDINIA





**NAUTICA ASSISTANCE**  
YACHT AGENTS & SUPPLIERS

SARDINIA  
CORSICA  
CARIBBEAN

## OROSEI AREA



### GENERAL RESTRICTIONS

- Navigation within 200 m from the coast
- Anchoring within 200 m from the coast
- 10 knots speed limit within 1 km from the coast
- Running any craft within 200 m from the coast with engines on
- Tying lines to rocks







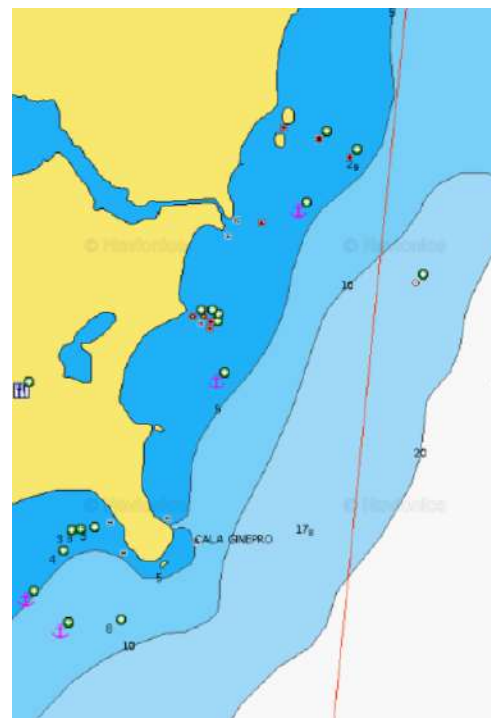
# OROSEI AREA

## CALA GINEPRO

Cala Ginepro, gets its name from the small juniper forest situated by the coast. The cove is famous for its transparent waters and its beach with fine sand and pebbles, smoothed by the erosive action of the sea. The low, rounded rocks act as a border to several areas of the beach, making it look like an outdoor swimming pool. The shallow waters also makes it suitable for children's games. Long walks and sunsets filled with poetry make the cove one of the most poetic on the eastern coast, accompanied by the intense evening fragrance of the junipers. This windswept area is the ideal destination for surfers and it is very popular with those who like to do some underwater fishing or snorkelling. Beware, for those coming from N don't pull over immediately to the beach: the S side of the point is fringed with rocks (scoglio Marchesa).



ANCHORAGE NAME	CALA GINEPRO - OROSEI	SEABOTTOM	SAND
COORDINATES	40°26'48.60"N 9°47'43.86"E	FACILITIES TO LAND ASHORE	NO
HIGHLIGHTS	NATURAL BEAUTY	FACILITIES ASHORE	BEACH BAR, FACILITIES
SHELTERED FROM	W - NW - N - NE WINDS	CLOSEST DROP-OFF POINT	STAGNO PETROSU
LIMITS AND PROHIBITIONS	NO FURTHER RESTRICTIONS	NEAREST COASTGUARD STATION	OLBIA





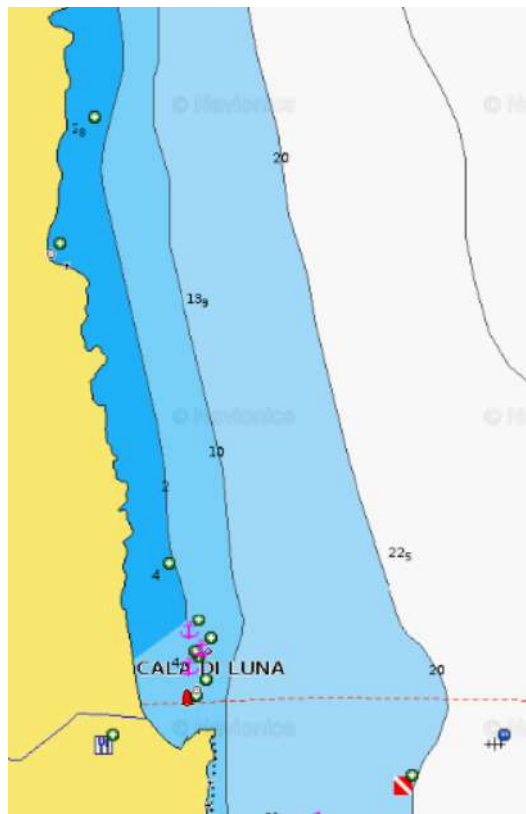
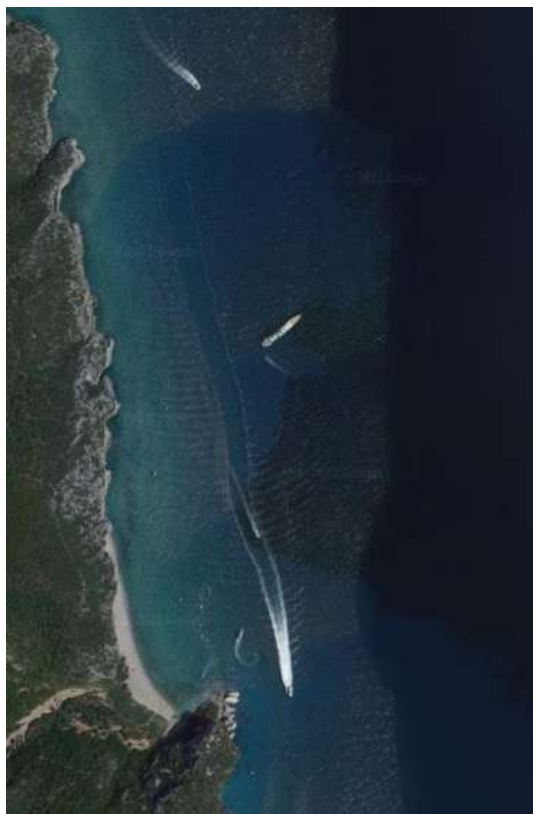
# OROSEI AREA

## CALA LUNA

Cala Luna, in the gulf of Orosei, just south of Dorgali, is one of the most beautiful beaches in Sardinia. Set against a backdrop of steep limestone cliffs and lush greenery, its turquoise and azure blue waters are crystal clear, making it one of the best snorkeling beaches in the area. This secluded beach lies approximately 3 kilometers away from the Bue Marino Caves – a big sea cave with stalactites, stalagmites, and rock carvings – making Cala Luna the perfect spot for boat excursions. A little dock is available to go ashore.



ANCHORAGE NAME	CALA LUNA	SEABOTTOM	SAND
COORDINATES	40°13'33.9"N 9°37'42.6"E	FACILITIES TO LAND ASHORE	YES
HIGHLIGHTS	NATURAL BEAUTY, HIKING, CAVES	FACILITIES ASHORE	NONE
SHELTERED FROM	SW - W - NW WINDS, OPEN TO E WIND	CLOSEST DROP-OFF POINT	CALA GONONE FUEL DOCK
LIMITS AND PROHIBITIONS	NO FURTHER RESTRICTIONS	NEAREST COASTGUARD STATION	OLBIA







# OROSEI AREA

## CALA SISINE

Considered as the small pearl of the Orosei Gulf because of the wonderful high cliffs of Serra Ovrà which gently slope to the sea from a height of over 500 metres. The whole bay is covered with Mediterranean maquis and surrounded by two rocky walls which, in their turn, make the place similar to a mountain rich of centuries-old carob tree and holm oaks. The bay is an ideal destination for scuba divers and anyone wishing to explore the local flora and fish fauna. Only 3NM south of Cala Luna.



ANCHORAGE NAME	CALA SISINE	SEABOTTOM	SAND AND PEBBLES
COORDINATES	40° 10' 48" N 9° 38' 9" E	FACILITIES TO LAND ASHORE	NO
HIGHLIGHTS	NATURAL BEAUTY	FACILITIES ASHORE	NONE
SHELTERED FROM	NW - W - SW WINDS	CLOSEST DROP-OFF POINT	CALA GONONE FUEL DOCK
LIMITS AND PROHIBITIONS	NO FURTHER RESTRICTIONS	NEAREST COASTGUARD STATION	OLBIA





# OROSEI AREA

## CALA MARIOLU

A real jewel in the Gulf of Orosei, on the central-eastern coast of Sardinia. Dive into this sea that looks painted. It is also known as ispùligi de nie (snow fleas) due to the small round, pink and white pebbles, mixed with sand. The cliff surrounding this beach, reaches a height of 500 metres and looks out onto the sea both to the north and to the south, making Cala Mariolu accessible from the land only via a challenging trekking trail (for experts) through dense Mediterranean scrub. Perfect spot for hiking and diving lovers.



 ANCHORAGE NAME	CALA MARIOLU	 SEABOTTOM	SAND AND ROCKS
 COORDINATES	40° 7'30.77"N 9°40'34.51"E	 FACILITIES TO LAND ASHORE	NO
 HIGHLIGHTS	NATURAL BEAUTY, HIKING, SNORKELING	 FACILITIES ASHORE	NONE
 SHELTERED FROM	W - SW - S WINDS	 CLOSEST DROP-OFF POINT	CALA GONONE - SANTA MARIA NAVARRESE
 LIMITS AND PROHIBITIONS	NO FURTHER RESTRICTIONS	 NEAREST COASTGUARD STATION	OLBIA





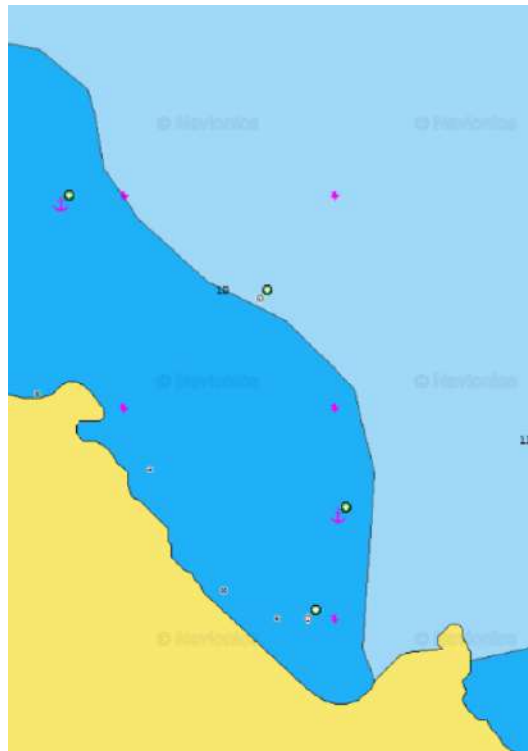
# OROSEI AREA

## CALA GOLORITZÉ

Situated about three kilometres away from Capo Monte Santu, Punta Goloritzé and Punta Caroddi, Cala Goloritzé is so beautiful that it was declared Italy's National Monument in 1995. The bay offers wonderful beaches composed of a multitude of tiny white marble pebbles in addition to the 143-metre Aguglia and a natural arch on the right side of the cove. Moreover, a fresh water source falls out from the rocks inside the beach and flows into the sea. Direct access to the beach is not permitted, anchor at 200mt from the coast, delimited by a line of floating buoys. Perfect spot for hikes, trekkings.



ANCHORAGE NAME	CALA GOLORITZÉ	SEABOTTOM	SAND
COORDINATES	40°06'32.8"N 9°41'25.1"E	FACILITIES TO LAND ASHORE	NO
HIGHLIGHTS	NATURAL BEAUTY, HIKING, SNORKELING	FACILITIES ASHORE	NONE
SHELTERED FROM	W - SW - S WINDS	CLOSEST DROP-OFF POINT	CALA GONONE
LIMITS AND PROHIBITIONS	NO FURTHER RESTRICTIONS	NEAREST COASTGUARD STATION	OLBIA







**NAUTICA ASSISTANCE**  
YACHT AGENTS & SUPPLIERS

SARDINIA  
CORSICA  
CARIBBEAN

SANTA MARIA NAVARRESE AREA



#### GENERAL RESTRICTIONS

- Navigation within 200 m from the coast
- Anchoring within 200 m from the coast
- 10 knots speed limit within 1 km from the coast
- Running any craft within 200 m from the coast with engines on
- Tying lines to rocks







# SANTA MARIA NAVARRESE AREA

## PEDRA LONGA

A tall limestone 'pyramid' rising from the sea, a natural monument on the Ogliastro coast of Baunei, in central-eastern Sardinia, a destination for hikers and climbers. Pedra Longa is actually a 'piece of mountain' fallen from the surrounding cliff, a link between the Gennargentu massif and the Gulf of Orosei. A calcareous-dolomitic block, an integral part (detached) of the vast Baunei plateau. Its 'spire' shape rises from the sea to a height of 128 metres: it is one of the highest rocky outcrops on the island, directly overlooking the sea, and was declared a natural monument in 1993. Pedra Longa marks the start of the spectacular, wild Baunei coastline, one of the most striking stretches of the Mediterranean: 40 kilometres of limestone ramparts overlooking waters of shimmering hues, interrupted by coves of pebbles and furrowed by canyons that reach down to the sea, forming beaches of soft, white sand.



ANCHORAGE NAME	PEDRA LONGA	SEABOTTOM	ROCK
COORDINATES	40° 01'49"N 9°42'23"E	FACILITIES TO LAND ASHORE	NO
HIGHLIGHTS	ROCKS AND SEAWEEDS	FACILITIES ASHORE	NONE
SHELTERED FROM	SW - W - NW WINDS	CLOSEST DROP-OFF POINT	SANTA MARIA NAVARRESE MARINA
LIMITS AND PROHIBITIONS	NO FURTHER RESTRICTIONS	NEAREST COASTGUARD STATION	ARBATAX



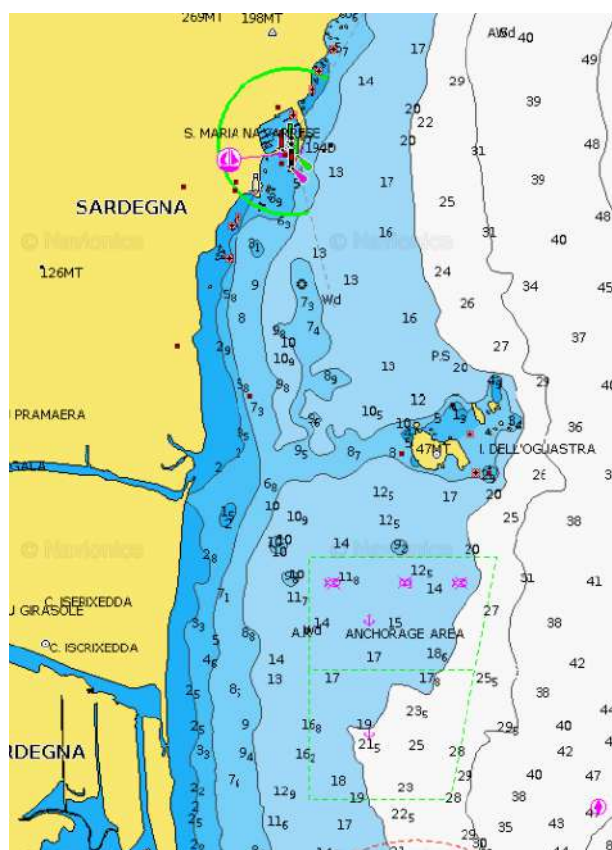
# SANTA MARIA NAVARRESE AREA

## ISOLA DELL'OGLIASTRA

The small coastal town of Santa Maria Navarrese is situated on the dramatic east coast of Sardinia, approximately 145km from both Cagliari in the south and Olbia in the north east. The town has a lovely bay with town beach and marina, and a selection of shops, café bars, restaurants and pizzerias. The Supramonte Mountains provide a dramatic backdrop to the town. You can easily anchor anywhere in front of the long beach and get sheltered from Westerly winds.



ANCHORAGE NAME	ISOLA DELL'OGLIASTRA	SEABOTTOM	ROCKS AND SEAWEED
COORDINATES	39°58'56.0"N 9°41'45.0"E	FACILITIES TO LAND ASHORE	NO
HIGHLIGHTS	NATURAL BEAUTY	FACILITIES ASHORE	NONE
SHELTERED FROM	SW - W - NW WINDS	CLOSEST DROP-OFF POINT	SANTA MARIA NAVARRESE MARINA
LIMITS AND PROHIBITIONS	NO FURTHER RESTRICTIONS	NEAREST COASTGUARD STATION	ARBATAX







**NAUTICA ASSISTANCE**  
YACHT AGENTS & SUPPLIERS

SARDINIA  
CORSICA  
CARIBBEAN

## ARBATAX AREA



### GENERAL RESTRICTIONS

- Navigation within 200 m from the coast
- Anchoring within 200 m from the coast
- 10 knots speed limit within 1 km from the coast
- Running any craft within 200 m from the coast with engines on
- Tying lines to rocks





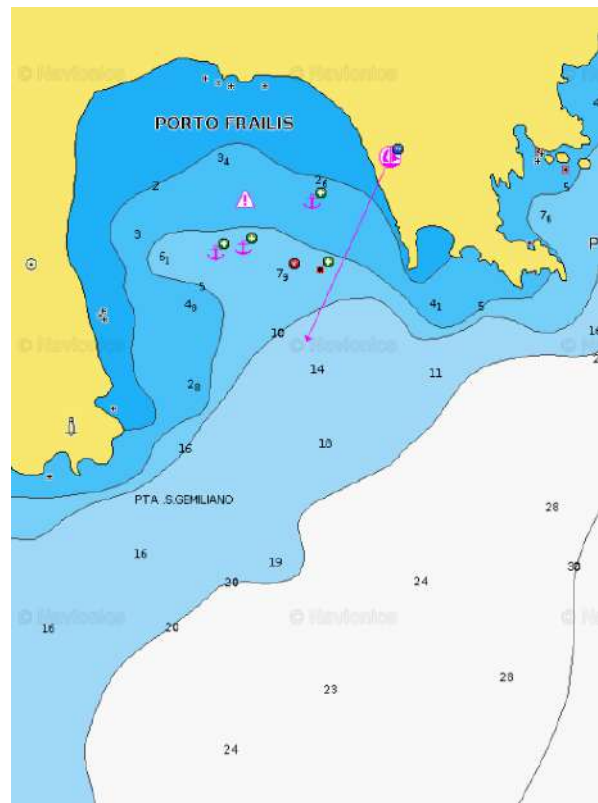
# ARBATAX AREA

## PORTO FRAILIS

A little south of Capo Bellavista there is a small cove, a very nice bay, sheltered from Northly and Westerly winds, flat sea with NW wind. Its waters are crystal clear and of a changing blue due to the plays of light created by the sun reflecting off the sea.



ANCHORAGE NAME	PORTO FRAILIS	SEABOTTOM	SAND
COORDINATES	39° 55' 21" N 9° 42' 24" E	FACILITIES TO LAND ASHORE	NO
HIGHLIGHTS	NATURAL BEAUTY	FACILITIES ASHORE	BEACH BAR
SHELTERED FROM	W - NW - N - NE WINDS	CLOSEST DROP-OFF POINT	ARBATAX MARINA
LIMITS AND PROHIBITIONS	NO FURTHER RESTRICTIONS	NEAREST COASTGUARD STATION	ARBATAX







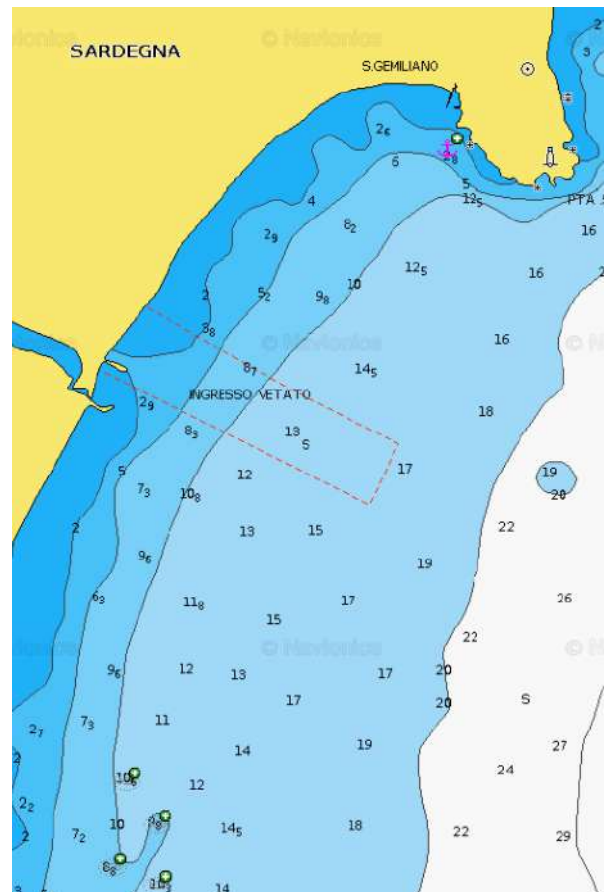
# ARBATAX AREA

## SAN GEMILIANO

A paradise for surfers, San Gemiliano beach stretches over 2 km around the Gulf of St. Gemiliano, drawing a beautiful golden sandy bay. Dominated by the tower, the beach of San Gemiliano it's characterised by the dense vegetation of the Mediterranean scrub. A long beach bordered by beautiful trees and a magnificent open view of all the surrounding mountains.



ANCHORAGE NAME	SAN GEMILIANO	SEABOTTOM	SAND
COORDINATES	39° 55' 8" N 9° 41' 50" E	FACILITIES TO LAND ASHORE	YES, HOTEL CLUB SARACENO
HIGHLIGHTS	NATURAL BEAUTY	FACILITIES ASHORE	RESTAURANTS
SHELTERED FROM	W - NW - N - NE WINDS	CLOSEST DROP-OFF POINT	ARBATAX MARINA
LIMITS AND PROHIBITIONS	NO FURTHER RESTRICTIONS	NEAREST COASTGUARD STATION	ARBATAX





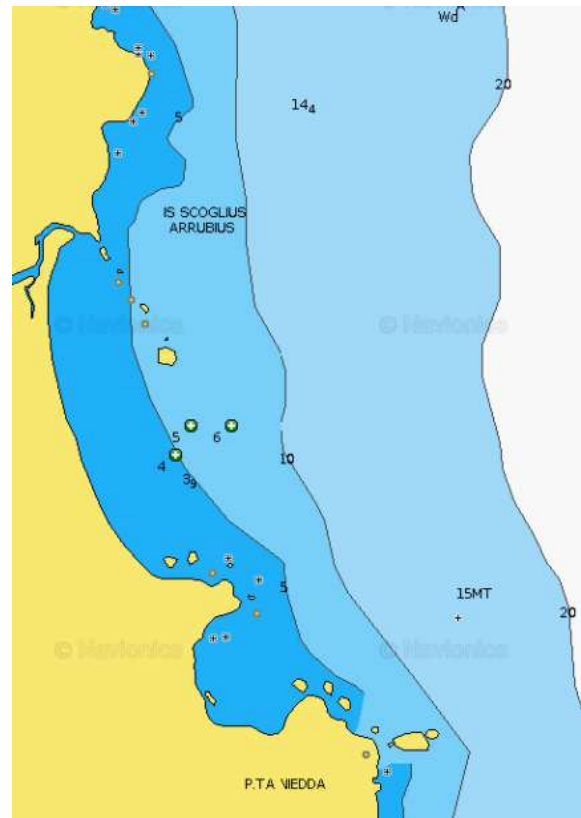
# ARBATAX AREA

## CEA BAY

Cea beach is about 1 km long, made up of fine white sand. Bordered to the south by a strip of rocks (Punta Niedda), it is known for the presence, a few meters from the shore, of the beautiful red Faraglioni (Is Scoglius Arrubius), besieged by those who want to dive into the clear sea of the beach.



ANCHORAGE NAME	CEA BAY	SEABOTTOM	SAND
COORDINATES	39° 52' 12" N 9° 41' 9" E	FACILITIES TO LAND ASHORE	NO
HIGHLIGHTS	NATURAL BEAUTY	FACILITIES ASHORE	BEACH BAR, FACILITIES
SHELTERED FROM	SW - W WINDS	CLOSEST DROP-OFF POINT	ARBATAX MARINA
LIMITS AND PROHIBITIONS	NO FURTHER RESTRICTIONS	NEAREST COASTGUARD STATION	ARBATAX







**NAUTICA ASSISTANCE**  
YACHT AGENTS & SUPPLIERS

SARDINIA  
CORSICA  
CARIBBEAN

## MURAVERA AREA



### GENERAL RESTRICTIONS

- Navigation within 200 m from the coast
- Anchoring within 200 m from the coast
- 10 knots speed limit within 1 km from the coast
- Running any craft within 200 m from the coast with engines on
- Tying lines to rocks





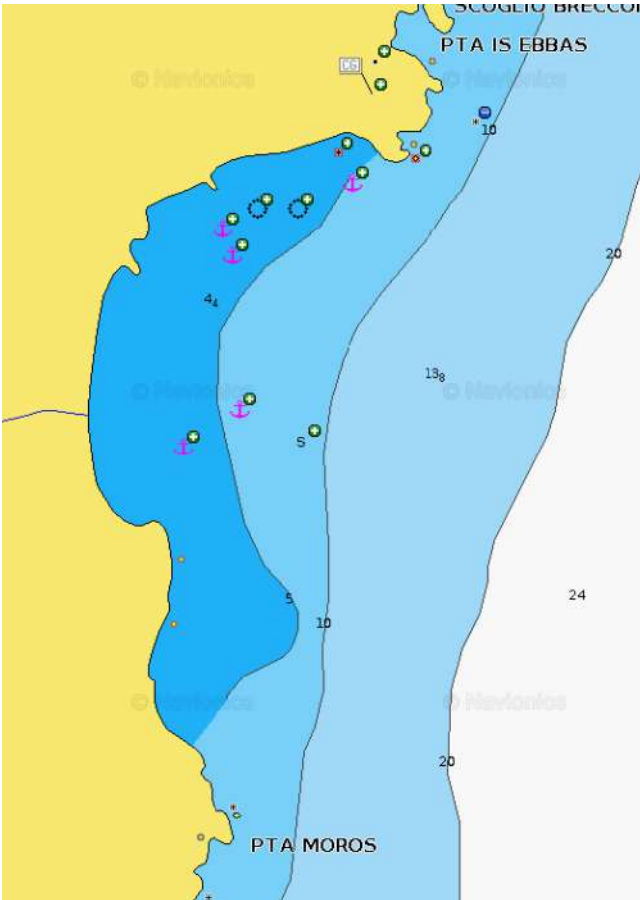
# MURAVERA AREA

## FOXI MANNA

Very nice bay with perfect sand bottom for anchorage, best to the North side. Very handy in the north side of the concrete dock to get ashore.



 ANCHORAGE NAME	FOXI MANNA	 SEABOTTOM	SAND
 COORDINATES	39° 41' 41" N 9° 39' 46" E	 FACILITIES TO LAND ASHORE	YES, CONCRETE DOCK
 HIGHLIGHTS	NATURAL BEAUTY	 FACILITIES ASHORE	BEACH BAR, RESTAURANT
 SHELTERED FROM	NW - W - SW WINDS	 CLOSEST DROP-OFF POINT	FOXI MANNA CONCRETE DOCK
 LIMITS AND PROHIBITIONS	NO FURTHER RESTRICTIONS	 NEAREST COASTGUARD STATION	ARBATAX







# MURAVERA AREA

## MURTAS BEACH

Beautiful bay whose white beach named from the wide mouth of the river that flows into it. It is 1 NM S capo Sferracavallo. Anchorage during good weather, sheltered from W winds. Located east of Quirra, inside a military zone, it is 6 kilometers long. Anchoring and reaching the beach is allowed only from June to September. It is characterized by the presence of soft light beige sand dunes. The surrounding landscape is wild and evocative, with a scenario that combines sun and sea with birdwatching, biking and trekking and water sports. With a depth of around 15 meters (up to 25 meters) and rich in various fish species, this stretch of sea is particularly popular with those who love underwater fishing and diving. It is one of the wildest beaches in Sardinia, there are no facilities (bar or restaurants) available.



ANCHORAGE NAME

MURTAS BEACH

SEABOTTOM

SAND

COORDINATES

39° 32' 37" N  
9° 38' 39" E

FACILITIES TO LAND ASHORE

NO

HIGHLIGHTS

NATURAL BEAUTY

FACILITIES ASHORE

NONE

SHELTERED FROM

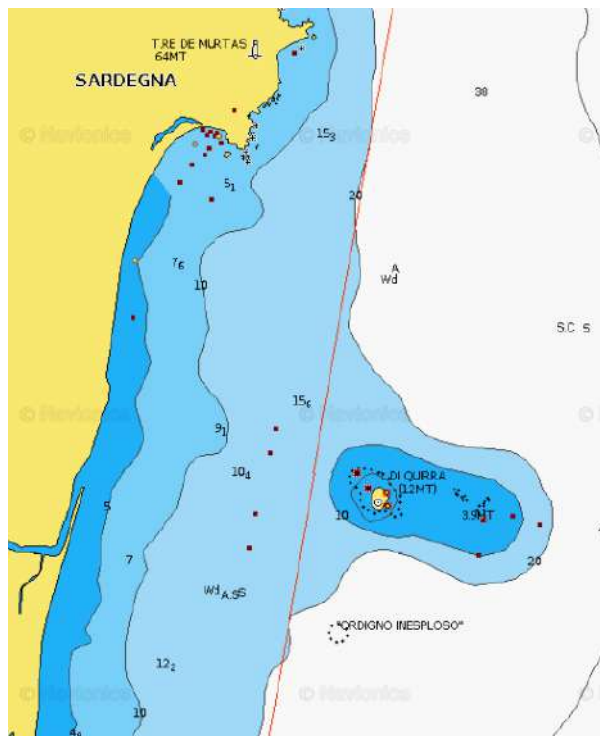
NW - W - SW WINDS

CLOSEST DROP-OFF POINT

PORTO CORALLO MARINA

LIMITS AND PROHIBITIONS NO FURTHER RESTRICTIONS

NEAREST COASTGUARD STATION ARBATAX

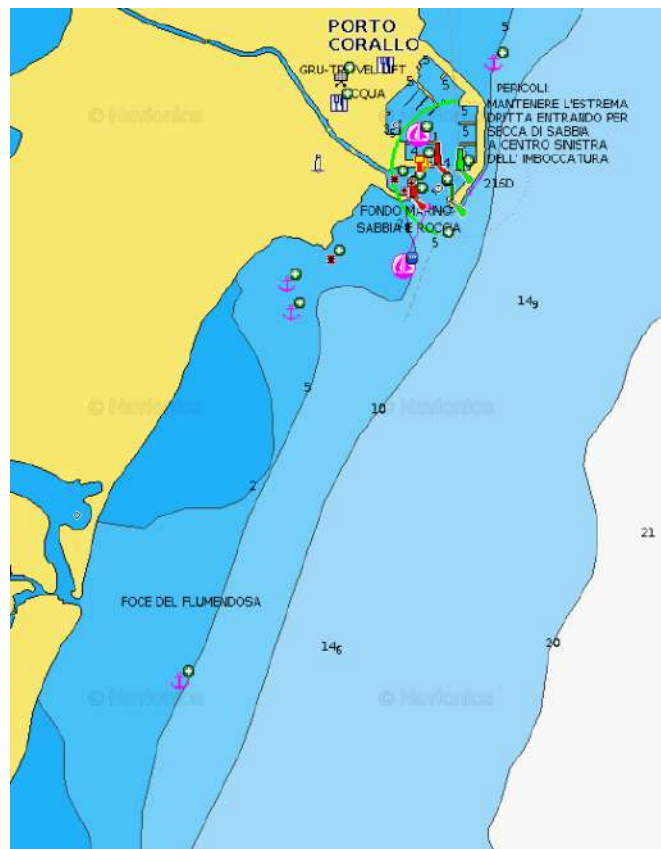
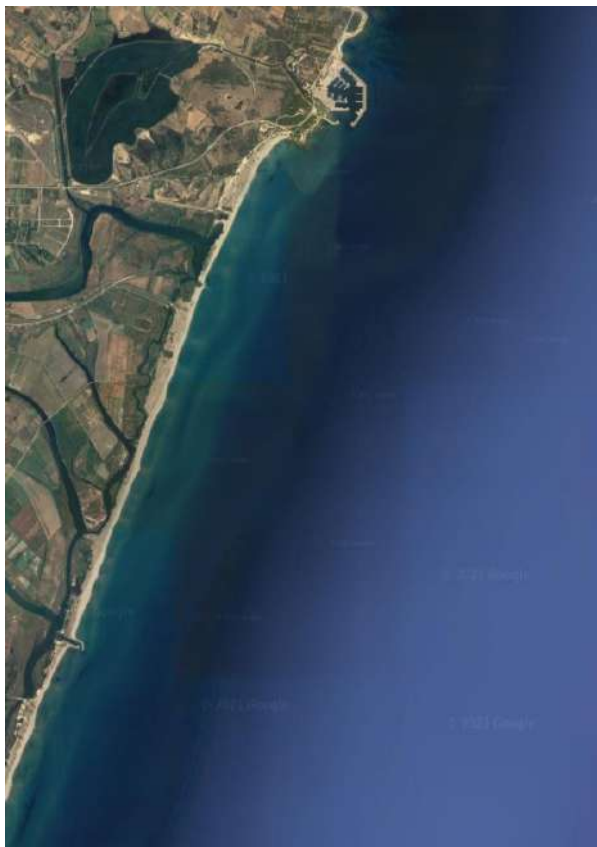




# MURAVERA AREA

## PORTO CORALLO

Anchorage in Porto Corallo is on the south side of the marina, along the beach, great protection from Westerly winds.

**ANCHORAGE NAME****PORTO CORALLO****SEABOTTOM****SAND****COORDINATES****39° 25' 55" N  
9° 38' 4" E****FACILITIES TO LAND ASHORE****YES****HIGHLIGHTS****NATURAL BEAUTY****FACILITIES ASHORE****NONE****SHELTERED FROM****NW - W - SW WINDS****CLOSEST DROP-OFF POINT****PORTO CORALLO MARINA****LIMITS AND PROHIBITIONS****NO FURTHER RESTRICTIONS****NEAREST COASTGUARD STATION****ARBATAX**





**NAUTICA ASSISTANCE**  
YACHT AGENTS & SUPPLIERS

SARDINIA  
CORSICA  
CARIBBEAN

## COSTA REI AREA



orgio Fanni

### GENERAL RESTRICTIONS

- Navigation within 200 m from the coast
- Anchoring within 200 m from the coast
- 10 knots speed limit within 1 km from the coast
- Running any craft within 200 m from the coast with engines on
- Tying lines to rocks





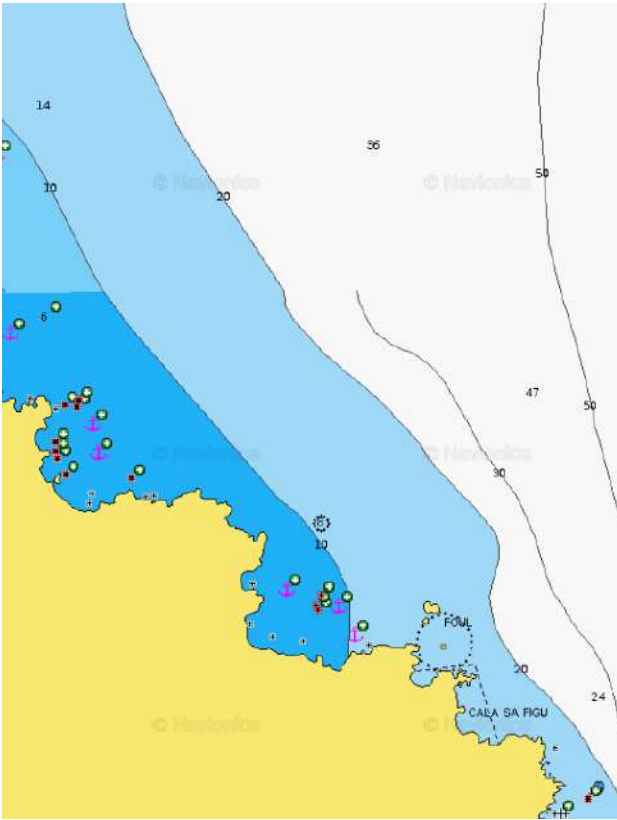
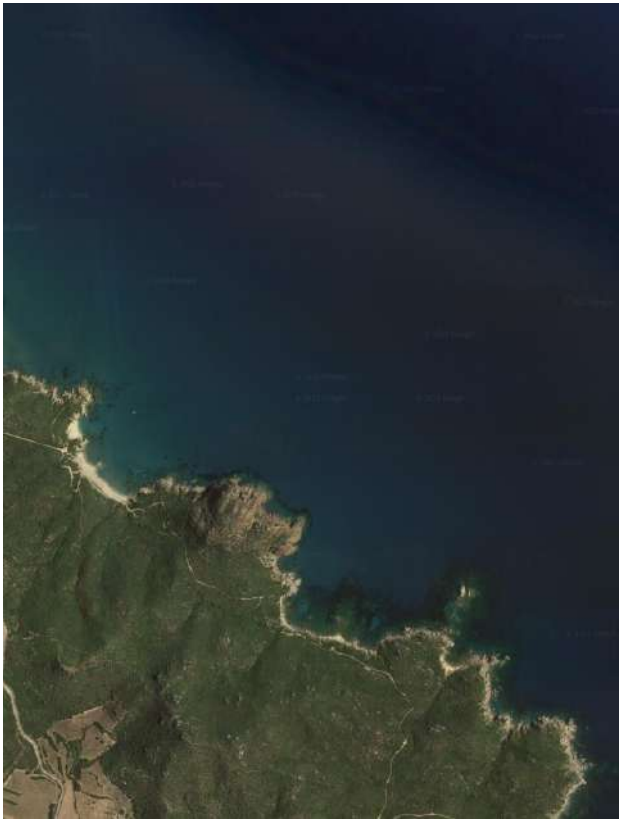
# COSTA REI AREA

## CALA SA FIGU

Beautiful place, excellent shelters from the SW. The path that climbs to the left of the beach offers a magnificent viewpoint.



 ANCHORAGE NAME	CALA SA FIGU	 SEABOTTOM	SAND
 COORDINATES	39° 18' 48" N 9° 36' 51" E	 FACILITIES TO LAND ASHORE	NO
 HIGHLIGHTS	NATURAL BEAUTY	 FACILITIES ASHORE	NONE
 SHELTERED FROM	W - SW - S WINDS	 CLOSEST DROP-OFF POINT	PORTO CORALLO MARINA
 LIMITS AND PROHIBITIONS	NO FURTHER RESTRICTIONS	 NEAREST COASTGUARD STATION	CAGLIARI







# COSTA REI AREA

## CAPO FERRATO

Nice anchorage on a sandy bottom from 4 to 7 m of clear water in front of a pebbles beach. In Capo Ferrato, the wild promontory is ideal for walking through dense pine forests, beautiful picnic benches invite you to take a break. For those looking for solitude, you can go and find a spot in one of the enchanting but rather steep and rocky mini-bays, which are found along the Capo Ferrato promontory. Its southern side will surprise you with the quiet beach of Portu Pirastu, perfect for relaxing and snorkeling. The peculiarity of this fine gravel beach is the configuration of its seabed: small sandbanks alternate with flat and shiny stones, constantly changing the colors of the water.



 ANCHORAGE NAME

CAPO FERRATO

 SEABOTTOM

SAND

 COORDINATES

39° 17' 24" N  
9° 36' 21" E

 FACILITIES TO LAND ASHORE

NO

 HIGHLIGHTS

NATURAL BEAUTY

 FACILITIES ASHORE

NONE

 SHELTERED FROM

W - NW - N - NE WINDS

 CLOSEST DROP-OFF POINT

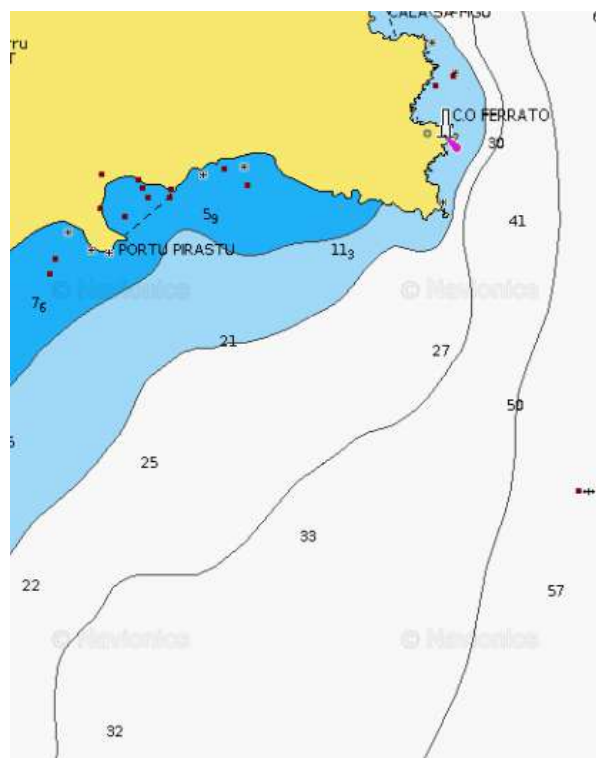
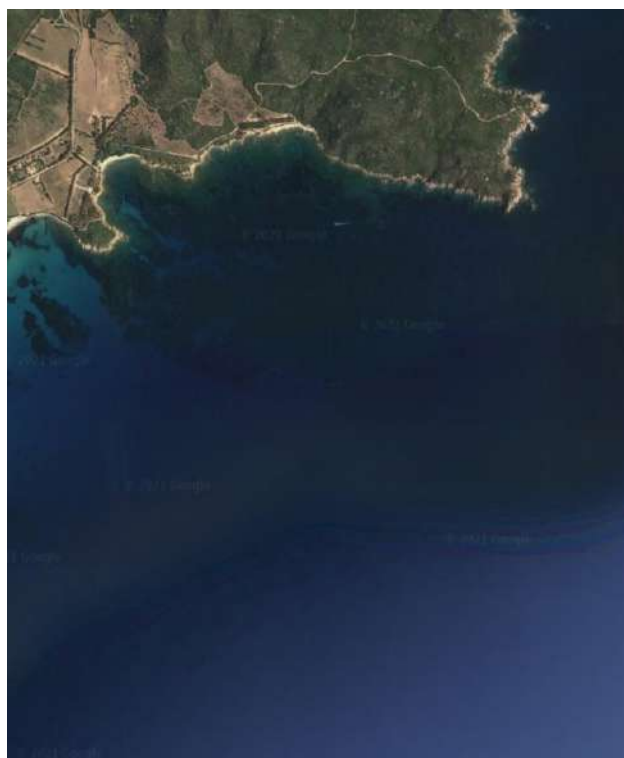
PORTO CORALLO MARINA

 LIMITS AND PROHIBITIONS

NO FURTHER RESTRICTIONS

 NEAREST COASTGUARD STATION

CAGLIARI















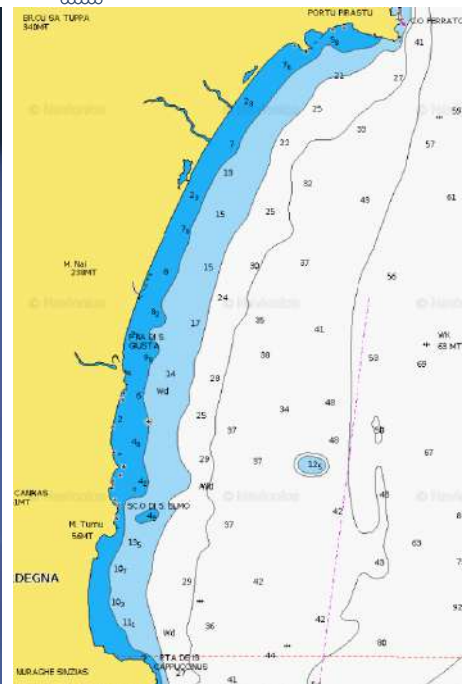
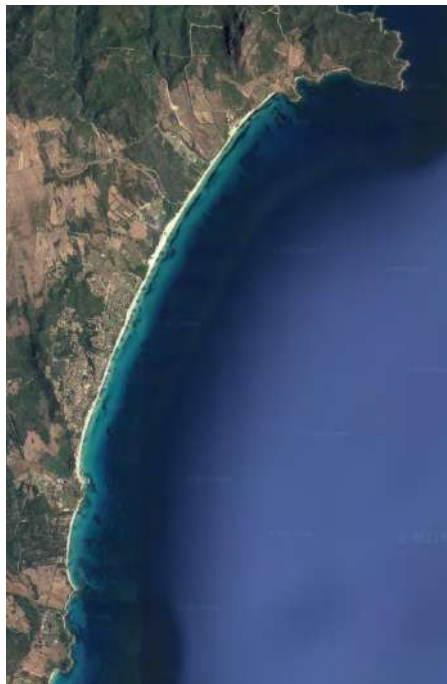
# COSTA REI AREA

## COSTA REI

Costa Rei is a location in southern Sardinia between the municipalities of Muravera, Castiadas and Villasimius. Geographically it is bordered to the north by Capo Ferrato and to the south by the Peppino rock united by an uninterrupted beach of more than 7 km in length and characterized by the white color and the medium-fine sand particle size. Known for the exceptional transparency of its waters, it is a favorite destination for all the Sardinian travelers who are fond of snorkeling and diving. Exploring further south find the Marine Protected Area of Capo Carbonara, the particular morphology of the coast offers fantastic trips into the coves like Cala Sa Figu, Portu S'Illixi, Punta Molentis, Punta Proceddus and the depths of the Island of Serpentara and Cavoli Island. The slightly hilly landscapes of the hinterland are suitable for mountain biking or trekking with unmissable panoramic views of the sea from above, the surrounding woods and interesting archaeological remains. The commercial squares offer the tasting of the best local food and wine products from all over Sardinia.



 ANCHORAGE NAME	COSTA REI	 SEABOTTOM	SAND
 COORDINATES	39° 15' 13" N 9° 34' 40" E	 FACILITIES TO LAND ASHORE	YES
 HIGHLIGHTS	NATURAL BEAUTY	 FACILITIES ASHORE	BEACH BAR, RESTAURANT
 SHELTERED FROM	NW - W - SW WINDS	 CLOSEST DROP-OFF POINT	PISCINA REI - CAMPING LE DUNE
 LIMITS AND PROHIBITIONS	NO FURTHER RESTRICTIONS	 NEAREST COASTGUARD STATION	CAGLIARI







# COSTA REI AREA

## CALA SINZIAS

Cala Sinzias is a large and pleasant inlet, on the southeastern coast of Sardinia. Immediately to the S of the renowned Costa Rei, it is approximately 8 miles SSW of Capo Ferrato and 7 miles NNE of Capo Carbonara (Villasimius). Coming from the N, pay attention to the Scoglio di Sant'Elmo, which protrudes about 600 m from the coast. The bay is bounded to the S by Punta is Cappuccinus, which provides good shelter from W and SW winds and partial shelter from moderate SE winds. However, keep in mind that the inlet is very open and as soon as the sirocco increases in intensity, an annoying surf tends to creep in. Even if Cala Sinzias seems to be sheltered also from N and NW winds, in reality it is not the best inlet to find shelter from them, even when moderate.



 ANCHORAGE NAME

CALA SINZIAS

 SEABOTTOM

SAND

 COORDINATES

39° 11' 32" N  
9° 34' 6" E

 FACILITIES TO LAND ASHORE

YES, LAUNCHING CORRIDOR  
TAMATETE

 HIGHLIGHTS

NATURAL BEAUTY

 FACILITIES ASHORE

RESTAURANTS AND BEACH  
CLUBS

 SHELTERED FROM

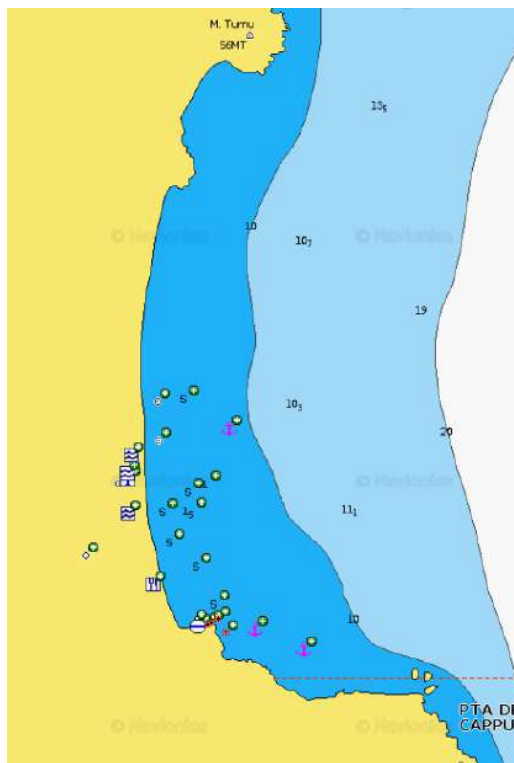
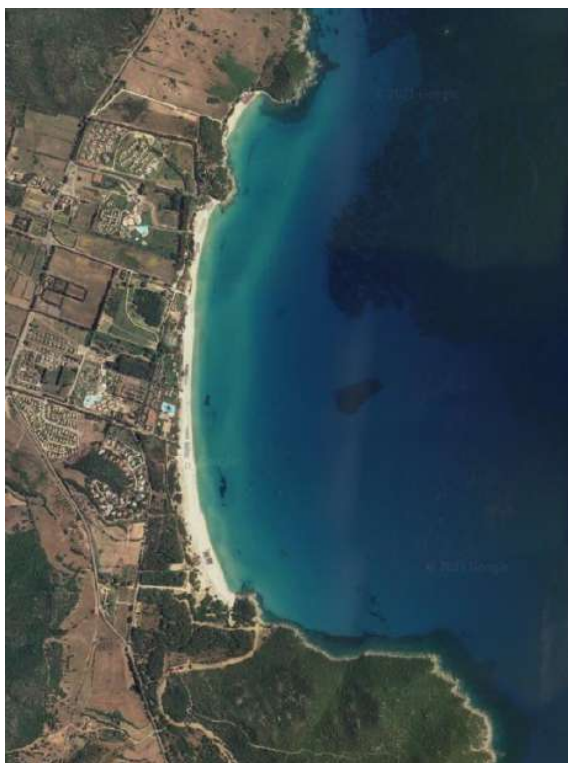
N - NW - SW - S WINDS

 CLOSEST DROP-OFF POINT

LIDO TAMATETE

 LIMITS AND PROHIBITIONS NO FURTHER RESTRICTIONS

 NEAREST COASTGUARD STATION CAGLIARI





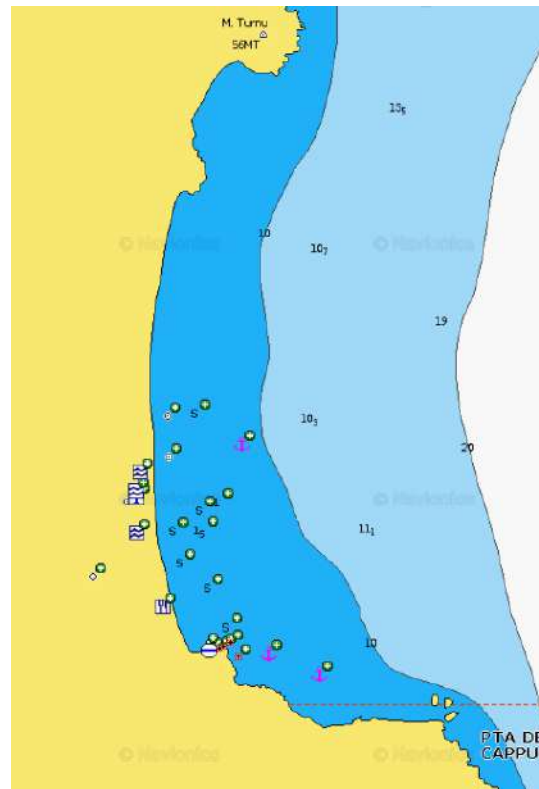
# COSTA REI AREA

## CALA PIRA

Cala Pira is a quiet place to enjoy an unforgettable sea and a seaside tranquility, suitable for the whole family. Cala Pira has a good holding in sand 5-8m, with crystal clear waters that makes it easy to spot if the anchor is well digged in, avoid with southerly and easterly winds.



ANCHORAGE NAME	CALA PIRA	SEABOTTOM	SAND
COORDINATES	39° 10' 14" N 9° 34' 21" E	FACILITIES TO LAND ASHORE	YES
HIGHLIGHTS	NATURAL BEAUTY	FACILITIES ASHORE	NONE
SHELTERED FROM	N - NW - W - SW WINDS	CLOSEST DROP-OFF POINT	CALA PIRA SPORTING YACHT CLUB
LIMITS AND PROHIBITIONS	NO FURTHER RESTRICTIONS	NEAREST COASTGUARD STATION	CAGLIARI







**NAUTICA ASSISTANCE**  
YACHT AGENTS & SUPPLIERS

SARDINIA  
CORSICA  
CARIBBEAN

## VILLASIMIUS AREA



E COAST SARDINIA



### GENERAL RESTRICTIONS

- Navigation within 200 m from the coast
- Anchoring within 200 m from the coast
- 10 knots speed limit within 1 km from the coast
- Running any craft within 200 m from the coast with engines on
- Tying lines to rocks







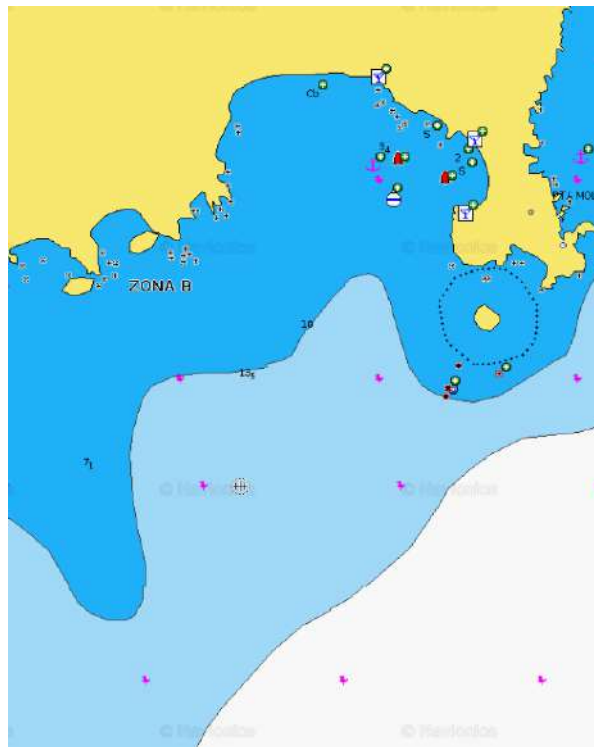
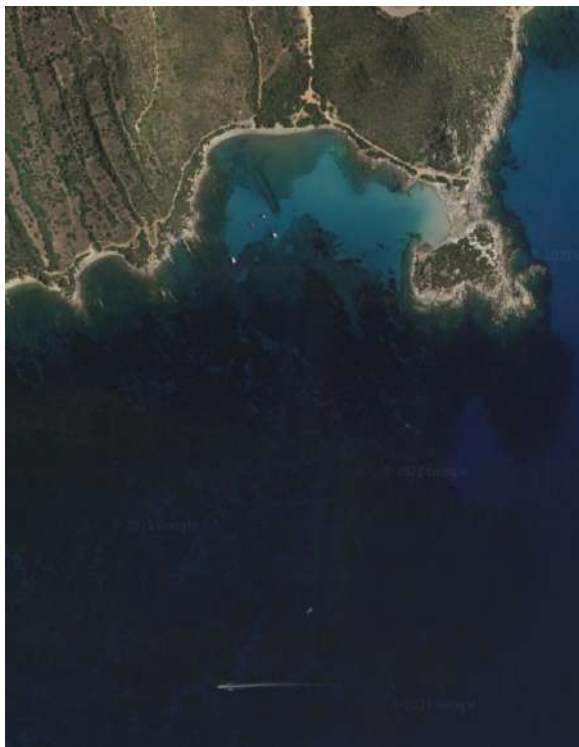
# VILLASIMIUS AREA

## PUNTA MOLENTIS - CAPO CARBONARA NATURAL PARK

Punta Molentis is a very pleasant inlet bordered to the E by the beautiful granite suggestive rocks, to the NE by a small white sand beach, very popular among the local tourism and to the North by a small stone beach. Punta Molentis promontory and the beach are part of the Marine Protected Area of Capo Carbonara and owe the name to "su molenti", the donkey, once transporting the material extracted from the surrounding granite quarries. Punta Molentis is a pleasant anchorage, sheltered by NE breezes, the anchorage is pleasant and peaceful, in calm sea and wind conditions. In case of NW breezes move to Porto Giunco, NE of Capo Carbonara and anchor with 5-7 m depth. The water is crystal clear with an incredible blue, a swim is a must!



 ANCHORAGE NAME	PUNTA MOLENTIS	 SEABOTTOM	SAND
 COORDINATES	39°08'00"N 9°33'17"E	 FACILITIES TO LAND ASHORE	NO
 HIGHLIGHTS	NATURAL BEAUTY	 FACILITIES ASHORE	BAR AND BEACH FACILITIES
 SHELTERED FROM	N - NW - W - SW WINDS	 CLOSEST DROP-OFF POINT	VILLASIMIUS MARINA
 LIMITS AND PROHIBITIONS	SEE CAPO CARBONARA ZONING MAP & REGULATIONS	 NEAREST COASTGUARD STATION	CAGLIARI







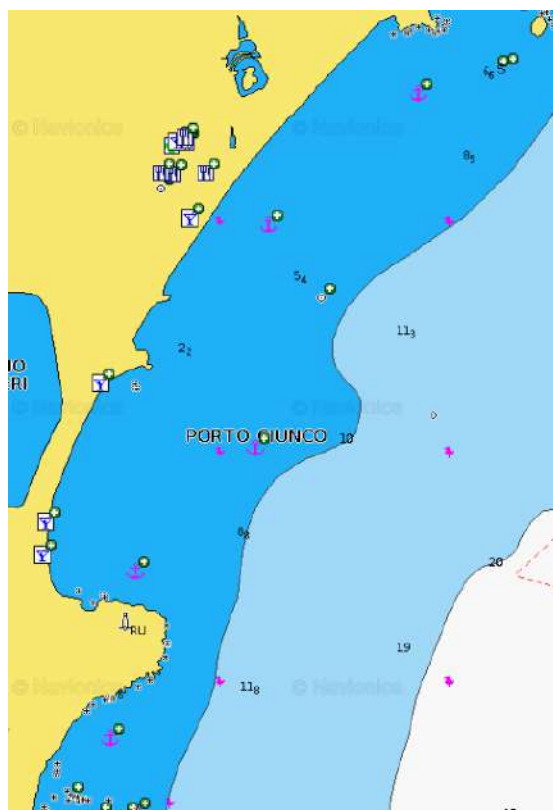
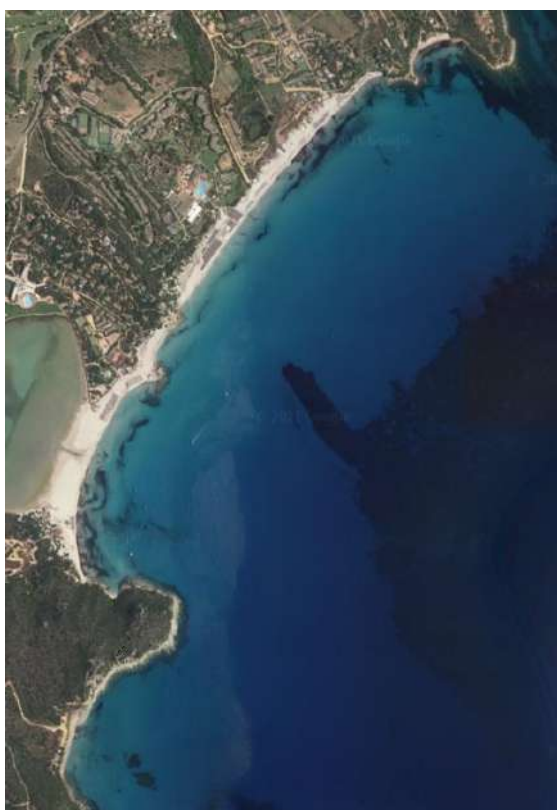
# VILLASIMIUS AREA

## PORTO GIUNCO - CAPO CARBONARA NATURAL PARK

Porto Giunco beach is located in the south-east side of Capo Carbonara, under Porto Giunco Aragonese Tower. Behind the beach, there is the Stagno di Notteri, a place pink flamingos have chosen as their habitat. It is one of the many natural attractions in the marine protected area. Beautiful white sand beach, sheltered from the West, and from the South, sandy bottom, crystal clear water. Any anchorage point in the bay offers a good holding on sand and seagrass bottom.



 ANCHORAGE NAME	PORTO GIUNCO	 SEABOTTOM	SAND AND SEAWEED
 COORDINATES	39° 6' 59" N 9° 31' 31" E	 FACILITIES TO LAND ASHORE	YES
 HIGHLIGHTS	NATURAL BEAUTY	 FACILITIES ASHORE	BEACH BAR, RESTAURANT
 SHELTERED FROM	NW - W - SW WINDS	 CLOSEST DROP-OFF POINT	VILLASIMIUS MARINA
 LIMITS AND PROHIBITIONS	SEE CAPO CARBONARA ZONING MAP & REGULATIONS	 NEAREST COASTGUARD STATION	CAGLIARI





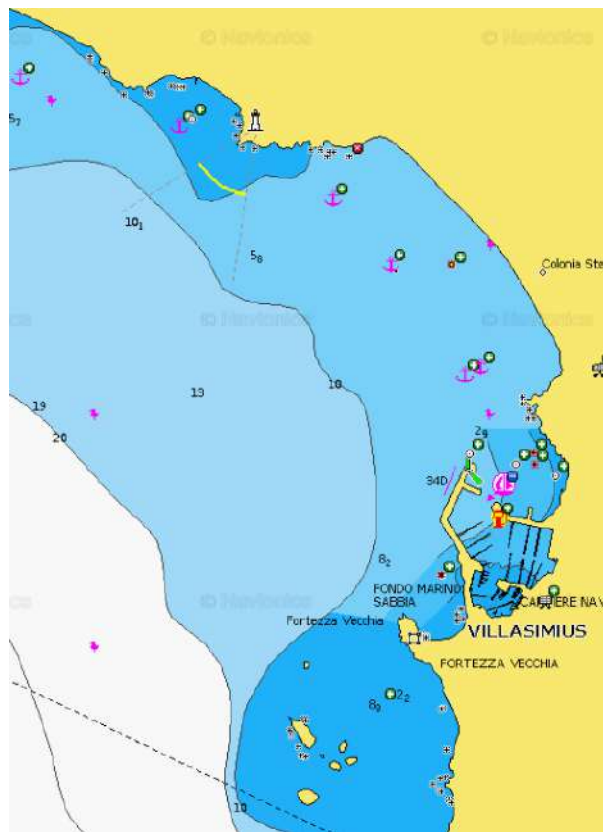
# VILLASIMIUS AREA

## CAMPULONGU - CAPO CARBONARA NATURAL PARK

Very nice anchorage over perfect good holding in 4/10 m (average depth 5 m) of sand, with protection from NW to SE. Nice swim to the beach. This bay is located just after the exit of the Marina of Villasimius. An hotel located on the beautiful sandy beach is a good landmark. It is a pleasant anchorage with clear transparent water.



ANCHORAGE NAME	CAMPULONGU	SEABOTTOM	SAND
COORDINATES	39° 7' 37" N 9° 30' 18" E	FACILITIES TO LAND ASHORE	YES
HIGHLIGHTS	NATURAL BEAUTY	FACILITIES ASHORE	BEACH BAR, RESTAURANT
SHELTERED FROM	N - NW - NE - E - SE WINDS	CLOSEST DROP-OFF POINT	VILLASIMIUS MARINA
LIMITS AND PROHIBITIONS	SEE CAPO CARBONARA ZONING MAP & REGULATIONS	NEAREST COASTGUARD STATION	CAGLIARI







**NAUTICA ASSISTANCE**  
YACHT AGENTS & SUPPLIERS

SARDINIA  
CORSICA  
CARIBBEAN



NA AGENCY

+39 0789 57607 - [info@nayacht.com](mailto:info@nayacht.com)

[WWW.NAYACHT.COM](http://WWW.NAYACHT.COM)



**NAUTICA ASSISTANCE**  
YACHT AGENTS & SUPPLIERS

SARDINIA  
CORSICA  
CARIBBEAN