



NAUTICA ASSISTANCE
YACHT AGENTS & SUPPLIERS

SARDINIA
CORSICA
CARIBBEAN

SUGGESTED ANCHORAGES



SUGGESTED ANCHORAGES

N COAST SARDINIA



NAUTICA ASSISTANCE
YACHT AGENTS & SUPPLIERS

SARDINIA
CORSICA
CARIBBEAN

SANTA TERESA AREA



GENERAL RESTRICTIONS

- Navigation within 200 m from the coast
- Anchoring within 200 m from the coast
- 10 knots speed limit within 1 km from the coast
- Running any craft within 200 m from the coast with engines on
- Tying lines to rocks





SANTA TERESA AREA

SANTA REPARATA

The beach of Santa Reparata or La Colba is located in Santa Teresa Gallura, in the extreme north-eastern tip of Sardinia. Located in a small and suggestive bay enclosed by beautiful cliffs, it is characterized by very fine light and soft sand that is reflected on clear and crystalline waters, which remain low for a long stretch from the shore. A sort of natural swimming pool with amazing colors of various shades of blue that recall distant tropical paradises. The anchorage is perfect to visit the unique area of Capo Testa.

**ANCHORAGE NAME****SANTA REPARATA****SEABOTTOM****SAND AND ROCKS****COORDINATES****41°13'49.22"N
9° 9'39.71"E****FACILITIES TO LAND ASHORE****LAUNCHING CORRIDOR****HIGHLIGHTS****CAPO TESTA****FACILITIES ASHORE****NONE****SHELTERED FROM****N - NE - E - SE WINDS****CLOSEST DROP-OFF POINT****SANTA TERESA PORT****LIMITS AND PROHIBITIONS****NATURAL MARINE PARK
RESTRICTIONS****NEAREST COASTGUARD STATION****SANTA TERESA**



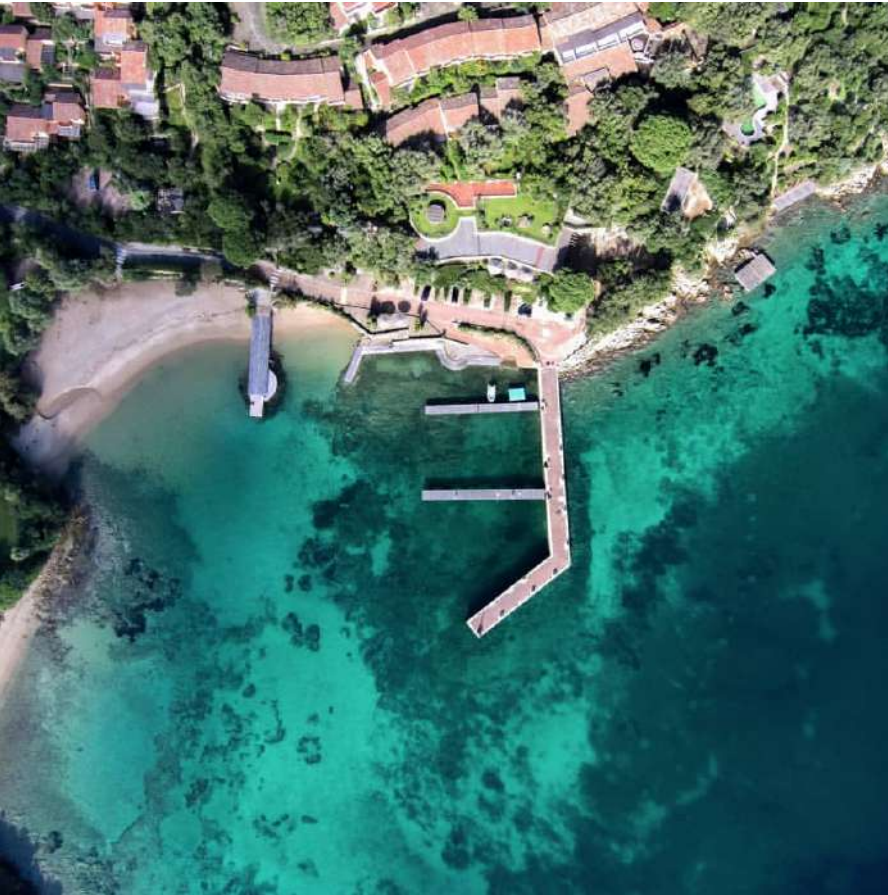
NAUTICA ASSISTANCE
YACHT AGENTS & SUPPLIERS

SARDINIA
CORSICA
CARIBBEAN

PALAU AREA



N COAST SARDINIA



GENERAL RESTRICTIONS

- Navigation within 200 m from the coast
- Anchoring within 200 m from the coast
- 10 knots speed limit within 1 km from the coast
- Running any craft within 200 m from the coast with engines on
- Tying lines to rocks





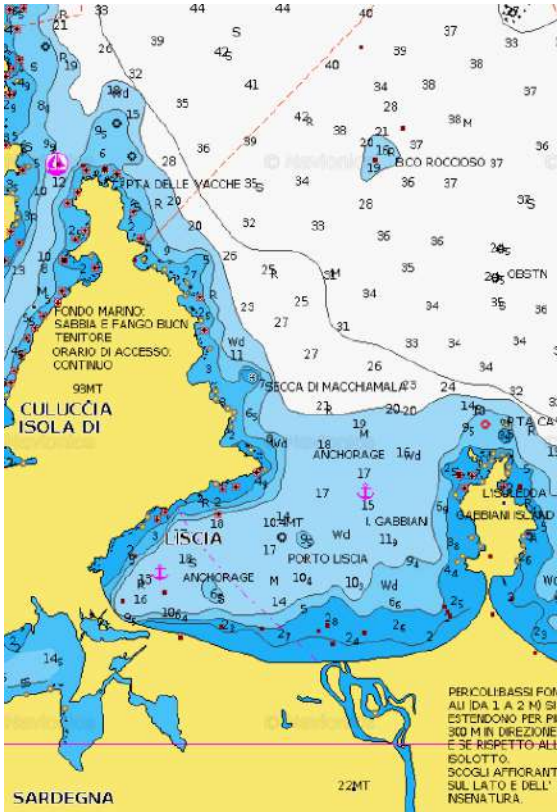
PALAU AREA

PORTO LISCIA

Porto Liscia is a wide bay off the Marine Park of La Maddalena. For this reason is ideal for watersport as there are not particular limits and restrictions. Being surrounded by a long beach on the South side, it is a common site for windsurfers. It is open only to the Northerly winds and it is plenty of water for anchoring any size of vessel.



 ANCHORAGE NAME	PORTO LISCIA	 SEABOTTOM	SAND
 COORDINATES	41°11'52.5"N 9°18'09.6"E	 FACILITIES TO LAND ASHORE	NO
 HIGHLIGHTS	WATERSPORTS	 FACILITIES ASHORE	BEACH BAR
 SHELTERED FROM	NW - W- SW - SE WINDS	 CLOSEST DROP-OFF POINT	PORTO LISCIA
 LIMITS AND PROHIBITIONS	NO FURTHER RESTRICTIONS	 NEAREST COASTGUARD STATION	PALAU





PALAU AREA

CALA DI TRANA

Cala di Trana, is one of the most evocative beaches of Sardinia's extreme north. It extends 200 metres in length, nestled between two enormous granite rock clusters and covered by Mediterranean scrub, can be reached only by sea. Characterised by pink sand and a crystal-clear sea, it is very secluded, hence the lack of structured bathing facilities. It is an ideal location for those who love tranquillity and diving to explore the particular marine fauna.



 ANCHORAGE NAME	CALA DI TRANA	 SEABOTTOM	SAND
 COORDINATES	41°12'21.90"N 9°21'15.77"E	 FACILITIES TO LAND ASHORE	NO
 HIGHLIGHTS	NATURAL BEAUTY, SNORKELING	 FACILITIES ASHORE	NONE
 SHELTERED FROM	W - SW - S - SE - E - NE WINDS	 CLOSEST DROP-OFF POINT	PALAU
 LIMITS AND PROHIBITIONS	NO FURTHER RESTRICTIONS	 NEAREST COASTGUARD STATION	LA MADDALENA



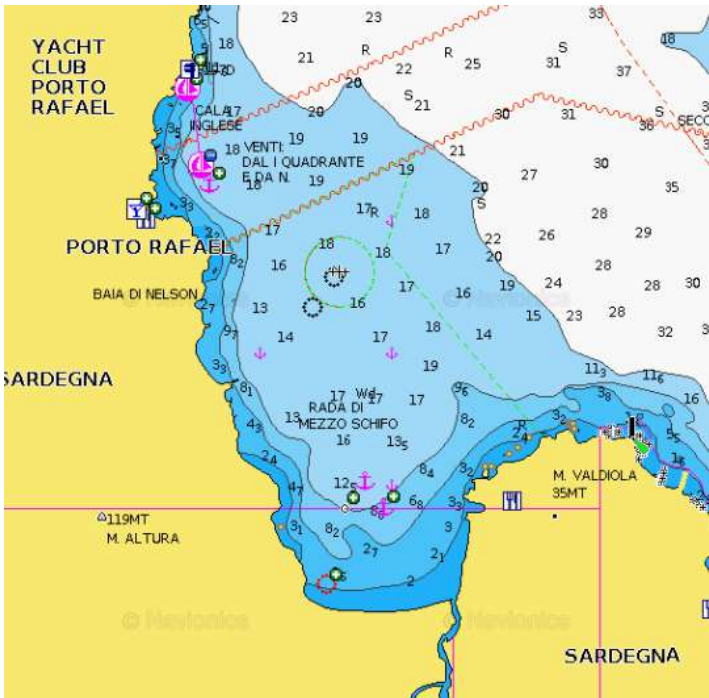
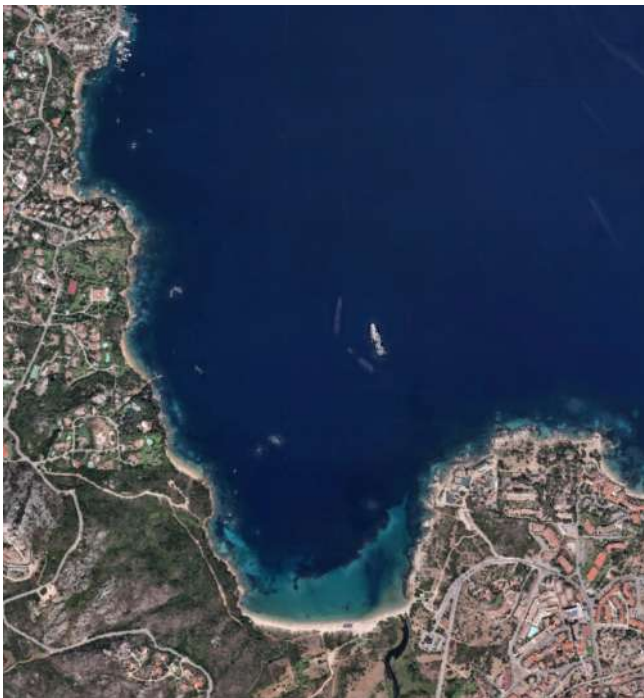
PALAU AREA

NELSON BAY O RADA DI MEZZO SCHIFO

Sheltered from most of the prevalent winds, Nelson bay offers good holding in 16- 18m of water. Officially called Rada di Mezzo Schifo, the bay is also known as Nelson Bay.



 ANCHORAGE NAME	NELSON BAY OR RADA DI MEZZO SCHIFO	 SEABOTTOM	SAND
 COORDINATES	41°11.0398 N 9°22.3235 E	 FACILITIES TO LAND ASHORE	NO
 HIGHLIGHTS	LA MADDALENA NATURAL PARK	 FACILITIES ASHORE	NONE
 SHELTERED FROM	NW - W - SW- SE WINDS	 CLOSEST DROP-OFF POINT	PORTO RAFAEL MARINA
 LIMITS AND PROHIBITIONS	NO FURTHER RESTRICTIONS	 NEAREST COASTGUARD STATION	PALAU





PALAU AREA

CALA CAPRA

Cala Capra is on the eastern side of Capo d'Orso, 4 km outside Palau. There is a beautiful grove of eucalyptus trees that provide shade to what has become the beach of the hotel Capo d'Orso. Protected from the mistral, the sand is medium-fine and pale yellow. A pier, where the hotel's shuttle and some other boats dock, closes off the bay and protects it from the waves when the Sirocco wind blows. The seabed provides interesting snorkelling, especially outside of the shelter of the bay, where the bottom drops to 10 metres. The hotel offers a restaurant and a wellness centre, 9 holes golf court. The little marina can accomodate boats up to 60m at the extrnal dock and up to 80 m in the 2 buoys.



 ANCHORAGE NAME	CALA CAPRA	 SEABOTTOM	SAND
 COORDINATES	41°10'06.4"N 9°25'16.9"E	 FACILITIES TO LAND ASHORE	MARINA DI CALA CAPRA DOCK
 HIGHLIGHTS	NATURAL BEAUTY, HOTEL CAPO D'ORSO	 FACILITIES ASHORE	CAPO D'ORSO HOTEL, RESTAURANT, SPA, GOLF
 SHELTERED FROM	W - NW - SW WINDS	 CLOSEST DROP-OFF POINT	CALA CAPRA DOCK, PALAU
 LIMITS AND PROHIBITIONS	NO FURTHER RESTRICTIONS	 NEAREST COASTGUARD STATION	PALAU



NAUTICA ASSISTANCE
YACHT AGENTS & SUPPLIERS

SARDINIA
CORSICA
CARIBBEAN

LA MADDALENA AREA



N COAST SARDINIA

PARK PERMIT REQUIRED FOR NAVIGATION IN THE PARK AREA.



NATURAL MARINE PARK RESTRICTIONS

- Maximum speed of 15 knots beyond 300 metres from the shore
- Maximum speed of 7 knots within 300 metres from the shore
- Anchoring: (exclusively on sandy-pebbly bottoms and never on posidonia meadows):
- From June 1st to October 30th, in the zoning areas called MB the anchorage (must be outside the buoy field boundary) is allowed only from sunrise to sunset and no later than 10 pm, with the exception of La Maddalena residents and boats with crates sewage collection that can remain afterhours
- Budelli Cala di Roto Island or "Spiaggia Rosa": The transiting, anchoring, stopping of any boat or craft is prohibited in the area of Cala di Roto or "Spiaggia Rosa". Also prohibited are bathing, snorkeling, diving and walking on the shore. Transit near the limits of the area must be kept below 3 knots.



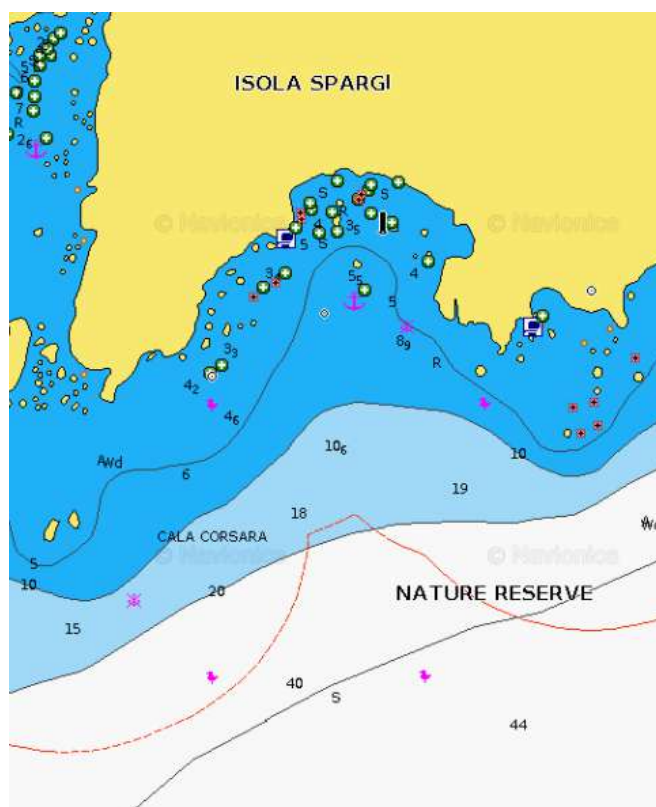
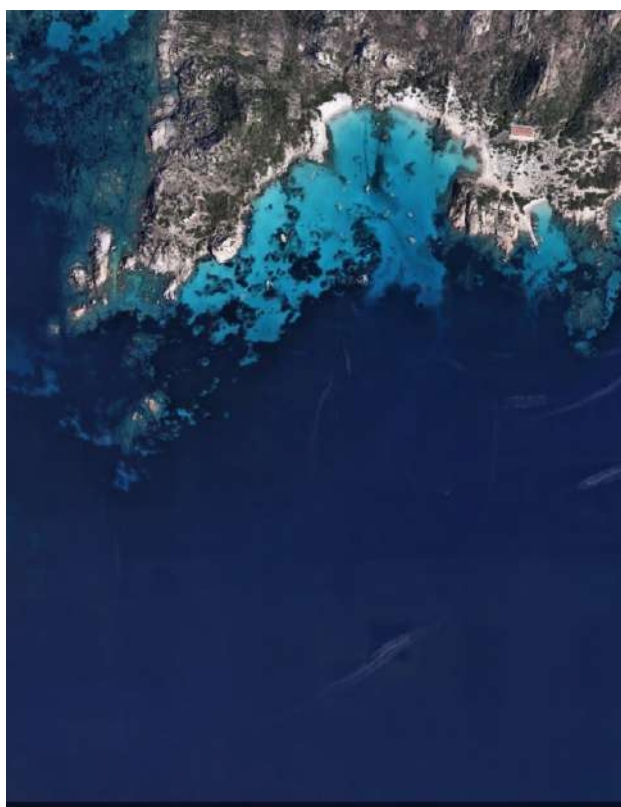


LA MADDALENA AREA

CALA CORSARA

One among the most beautiful anchorages of Sardinia, Cala Corsara is situated in the Southern part of Spargi Island and in front one of the most picturesque beaches of La Maddalena Archipelago, famous for its white sand and crystal-blue sea. On the western side of the cove raises the well-known granite rock of Testa della Strega, shaped by sea and wind over the years. The cove is well sheltered from west and North-West winds.

PARK PERMIT REQUIRED FOR NAVIGATION IN THE PARK AREA.

**ANCHORAGE NAME****CALA CORSARA****SEABOTTOM****SAND****COORDINATES****41°13'48.0"N
9°20'36.0"E****FACILITIES TO LAND ASHORE****NO****HIGHLIGHTS****NATURAL BEAUTY****FACILITIES ASHORE****NONE****SHELTERED FROM****NW - N WINDS****CLOSEST DROP-OFF POINT****CALA GAVETTA PORT LA
MADDALENA****LIMITS AND PROHIBITIONS****NATURAL MARINE PARK
RESTRICTIONS****NEAREST COASTGUARD STATION****LA MADDALENA**



LA MADDALENA AREA

CALA SPALMATORE

Cala Spalmatore is a marvellous inlet, a natural harbour located in the Northern part of the island of La Maddalena. The place is exceptional as it is quite sheltered from westerly winds and offers different services, such as those of bar, restaurant, pier, beach equipped to welcome people with disabilities on the main beach of Spalmatore. It is characterized by a white and thin sand and a crystalline turquoise sea.

It offers 40 moorings at the quay or at the buoy field for boats from 12 to 55 meters.

BERTHS: 20 berths at the dock, LOA up to 18m, draft up to 4m

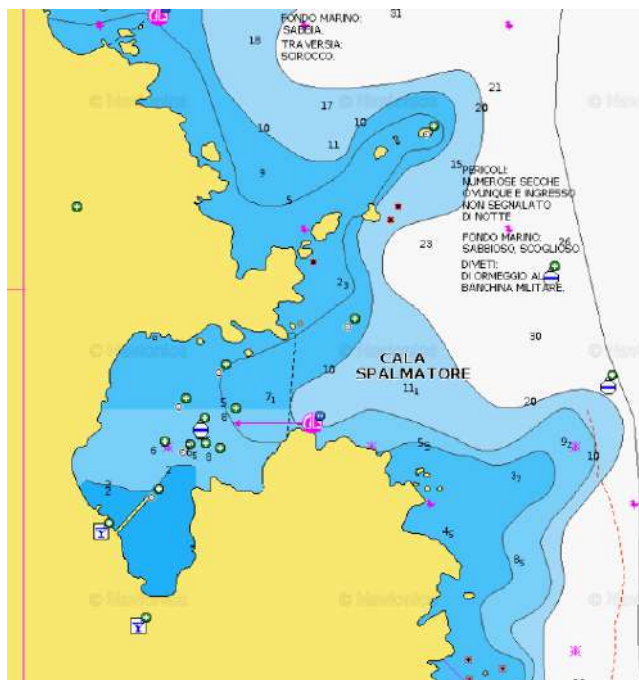
BUOYS: 20 buoys with LOA up to 55m, draft from 5 to 9m

It is possible to freely anchor 300m from the coast, good holding. There is a pontoon to the W, with 4m depth at the end.

PARK PERMIT REQUIRED FOR NAVIGATION IN THE PARK AREA.



ANCHORAGE NAME	CALA SPALMATORE - LA MADDALENA ISLAND	SEABOTTOM	SAND AND ROCKS
COORDINATES	41° 14' 58.546" N 9° 25' 46.610" E	FACILITIES TO LAND ASHORE	YES
HIGHLIGHTS	NATURAL BEAUTY	FACILITIES ASHORE	BEACH BAR, SUNBEDS
SHELTERED FROM	NW - W - SW WINDS	CLOSEST DROP-OFF POINT	PORTO MASSIMO
LIMITS AND PROHIBITIONS	NATURAL MARINE PARK RESTRICTIONS	NEAREST COASTGUARD STATION	LA MADDALENA





LA MADDALENA AREA

CALA FRANCESE

Beautiful cove on the west coast of the Maddalena, protected from the North. You can see a little concrete old dock at the bottom of the bay, no longer in use. The seabed is mostly sandy and almost immediately deep. The characteristic surrounding granite rock, covered with dense Mediterranean scrub, makes it one of the pearls of the Maddalena. Curious to know: the granite of this bay was used for the construction of the Statue of Liberty. Please note this anchorage is suitable for yachts up to 30-35m length, for the biggest ones we suggest to reposition in Cala Garibaldi.

PARK PERMIT REQUIRED FOR NAVIGATION IN THE PARK AREA.



 ANCHORAGE NAME

CALA FRANCESE - LA MADDALENA ISLAND

 SEABOTTOM

SAND AND ROCKS

 COORDINATES

41° 13' 34.165" N
9° 22' 34.766" E

 FACILITIES TO LAND ASHORE

NO

 HIGHLIGHTS

NATURAL BEAUTY

 FACILITIES ASHORE

BEACH BAR

 SHELTERED FROM

NE - E - SE WINDS

 CLOSEST DROP-OFF POINT

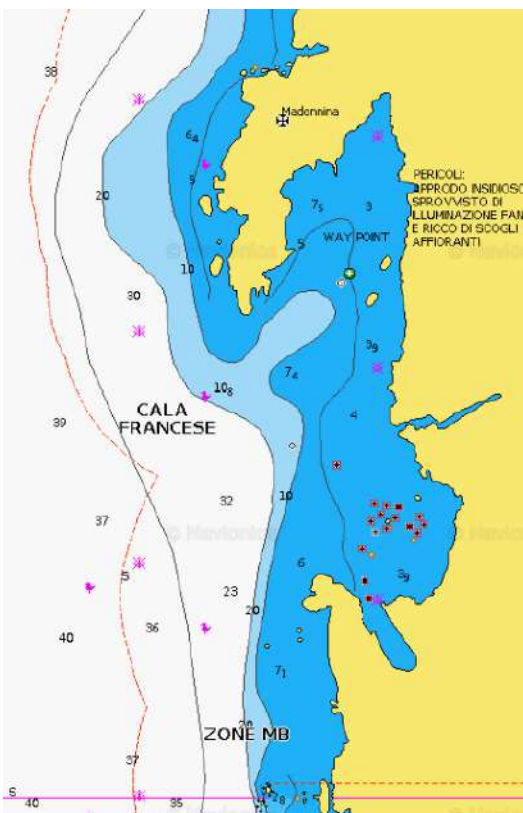
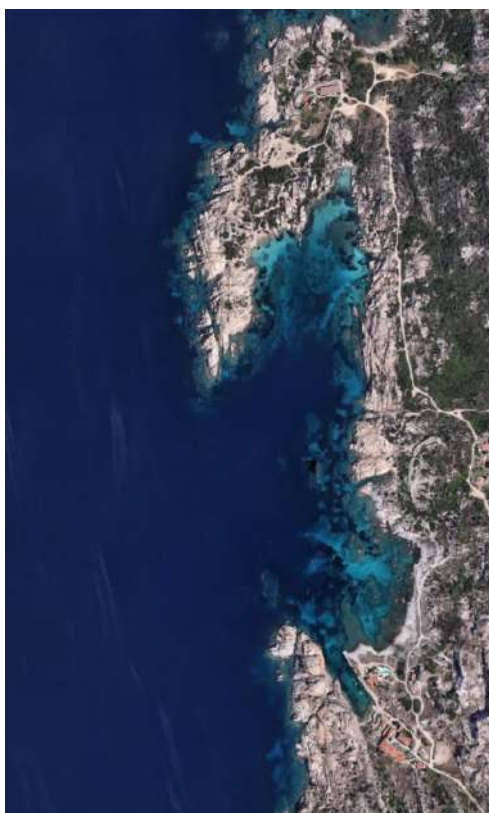
CALA GAVETTA PORT LA MADDALENA

 LIMITS AND PROHIBITIONS

NATURAL MARINE PARK RESTRICTIONS

 NEAREST COASTGUARD STATION

LA MADDALENA





LA MADDALENA AREA

CALA LUNGA & PORTO MASSIMO

Porto Massimo and its beautiful bay Cala Lunga are located in the northern part of Maddalena island. This anchorage has become a very popular meeting place for the international jet set during summer time. This amazing bay and its beach have become famous also thank you to the great service and hospitality given by La Scogliera Restaurant, famous for their seafood specialties and the romantic dinner sea view. The little but very well organized port of Porto Massimo is a very useful spot for guests drop off and guests pick up, and for any need during your cruise in this area.

The port can accomodates boats up to 50m between berths and buoys.

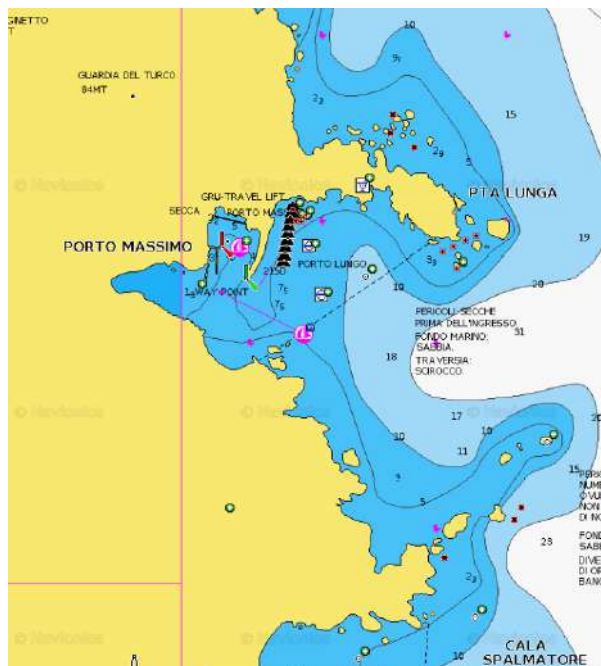
BERTHS (140): up to LOA 32m on internal dock, max draft 3,8m; up to 42m on the external dock.

BUOYS (10): external dock 4 shore buoys, LOA up to 42m and draft up to 2,85m; bay front of the port: 2 buoys up to LOA 50m, 8 buoys up to LOA 15-20m.

PARK PERMIT REQUIRED FOR NAVIGATION IN THE PARK AREA.



 ANCHORAGE NAME	CALA LUNGA & PORTO MASSIMO - LA MADDALENA ISLAND	 SEABOTTOM	SAND
 COORDINATES	41°15'28.8"N 9°25'50.4"E	 FACILITIES TO LAND ASHORE	YES
 HIGHLIGHTS	NATURAL BEAUTY, RESTAURANT LA SCOGLIERA	 FACILITIES ASHORE	YES
 SHELTERED FROM	N - NW- W - SW - S WINDS	 CLOSEST DROP-OFF POINT	PORTO MASSIMO
 LIMITS AND PROHIBITIONS	NATURAL MARINE PARK RESTRICTIONS	 NEAREST COASTGUARD STATION	LA MADDALENA





LA MADDALENA AREA

CALA NAPOLETANA

On the NW of Caprera island stands Cala Napoletana, an authentic paradise with spotless sand, limpid waters and Mediterranean shrub. An ideal place for those wishing to spend a relaxing day. This very tiny bay is very popular within yachts and reachable by tender when anchoring in between La Maddalena and Caprera island.

PARK PERMIT REQUIRED FOR NAVIGATION IN THE PARK AREA.

**ANCHORAGE NAME**

CALA NAPOLETANA - CAPRERA

**SEABOTTOM**

SAND

**COORDINATES**41°14'32.1"N
9°27'41.8"E**FACILITIES TO LAND ASHORE**

NO

**HIGHLIGHTS**

NATURAL BEAUTY

**FACILITIES ASHORE**

NONE

**SHELTERED FROM**

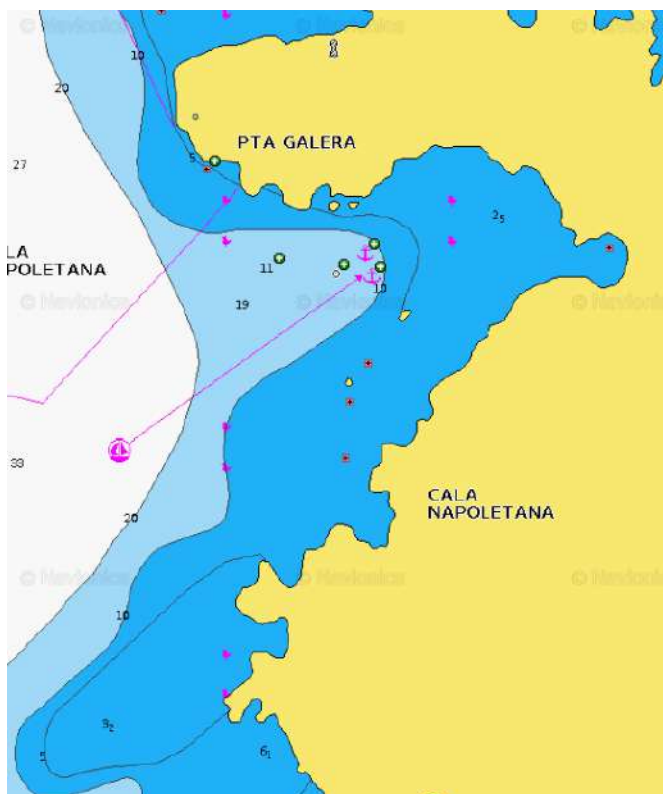
W - SW - SE - E WINDS

**CLOSEST DROP-OFF POINT**

PORTO MASSIMO

**LIMITS AND PROHIBITIONS**NATURAL MARINE PARK
RESTRICTIONS**NEAREST COASTGUARD STATION**

LA MADDALENA





LA MADDALENA AREA

CALA COTICCIO

A beach with a nickname as Tahiti doesn't leave too many doubts about its impressive beauty!

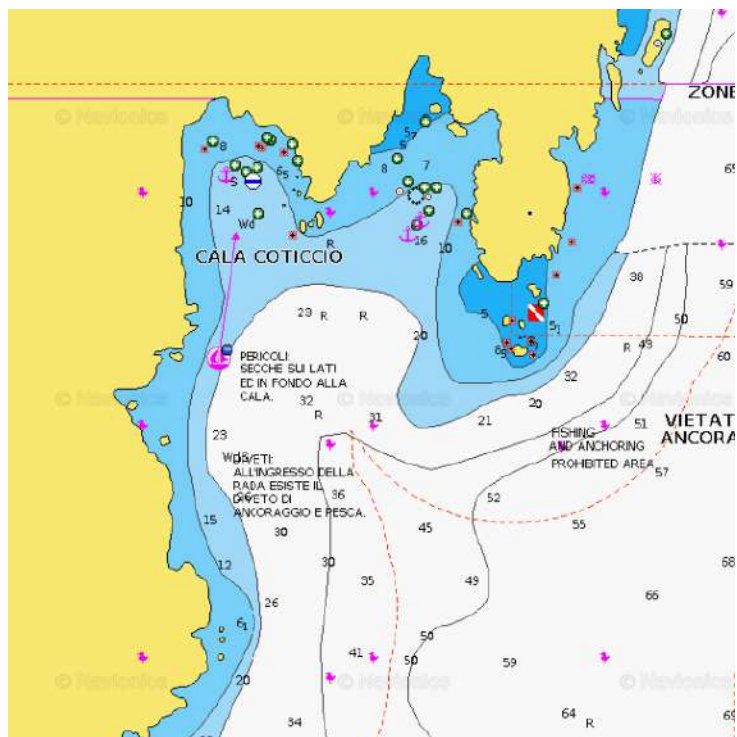
Cala Coticcio beach is a gem in the west side of Caprera island, in the Maddalena Archipelago national park. In a stunning landscape you will find yourself in a real natural pool reachable only by boat. An authentic aquarium with numerous species of fish and starfish. It is ideal for snorkelling enthusiasts. The island of Caprera is famous also for the fact that Giuseppe Garibaldi lived there until his death in 1882. His house is nowadays a visitable romantic museum.

The anchorage is allowed on sandy bottom at 300 meters from the shore. Cala Coticcio is one of the most popular anchorages in the North of sardinia, so it can get quite busy during the summer.

PARK PERMIT REQUIRED FOR NAVIGATION IN THE PARK AREA.



 ANCHORAGE NAME	CALA COTICCIO - CAPRERA	 SEABOTTOM	SAND AND SEAWEED
 COORDINATES	41° 13' 1.722" N 9° 29' 4.636" E	 FACILITIES TO LAND ASHORE	NO
 HIGHLIGHTS	NATURAL BEAUTY	 FACILITIES ASHORE	NONE
 SHELTERED FROM	SW - W - NW WINDS	 CLOSEST DROP-OFF POINT	POLTU QUATU
 LIMITS AND PROHIBITIONS	NATURAL MARINE PARK RESTRICTIONS	 NEAREST COASTGUARD STATION	LA MADDALENA






LA MADDALENA AREA

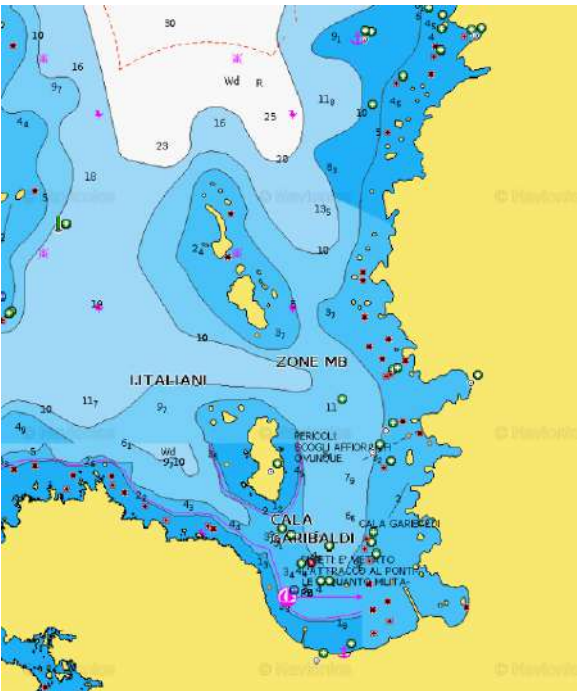
CALA GARIBALDI

One of the infinite tiny coves that jewel the Maddalena archipelago, in the far northeast of Sardinia: shining sand that shifts gently under the transparent waters, surrounded by white rocks clothed in Mediterranean brush. Its famous name is no coincidence: once upon a time, Giuseppe Garibaldi, hero of the two worlds moored his ships here, in a harbour that can still be seen. Cala Garibaldi takes up the north-western coast of Caprera, opposite the small island of Giardinelli and the three Italian islets. The beach has a gently sloping seabed forming small, natural swimming pools among the rocks. The museum of Garibaldi is available for visits. It offers fairy-tale landscapes, and is popular with snorkelling, underwater fishing and windsurfing enthusiasts. To the north the beach continues with two small bays sheltered by pink rocks and known as Cala Serena.

PARK PERMIT REQUIRED FOR NAVIGATION IN THE PARK AREA.



 ANCHORAGE NAME	CALA GARIBALDI - CAPRERA	 SEABOTTOM	SAND AND ROCKS
 COORDINATES	41° 13' 29.845" N 9° 27' 27.612" E	 FACILITIES TO LAND ASHORE	NO
 HIGHLIGHTS	NATURAL BEAUTY	 FACILITIES ASHORE	NONE
 SHELTERED FROM	W - SW - S - SE - E WINDS	 CLOSEST DROP-OFF POINT	PORTO MASSIMO OR CALA GAVETTA PORT
 LIMITS AND PROHIBITIONS	NATURAL MARINE PARK RESTRICTIONS	 NEAREST COASTGUARD STATION	LA MADDALENA





LA MADDALENA AREA

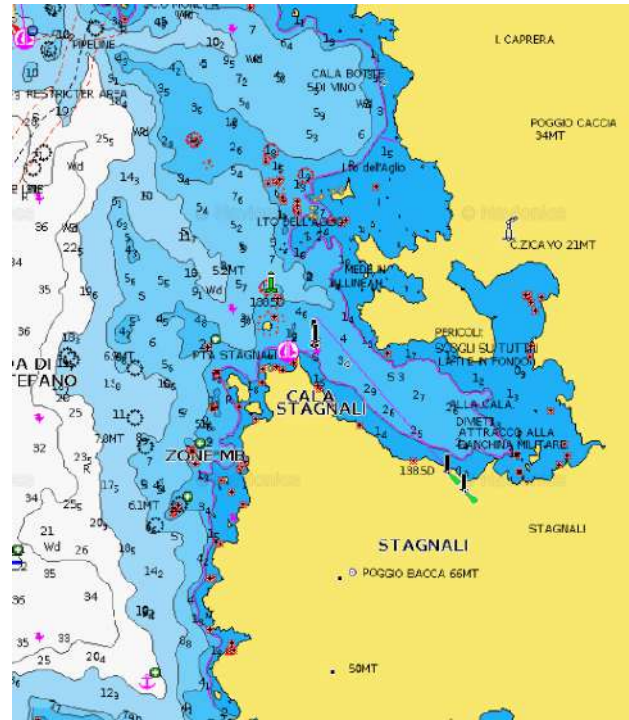
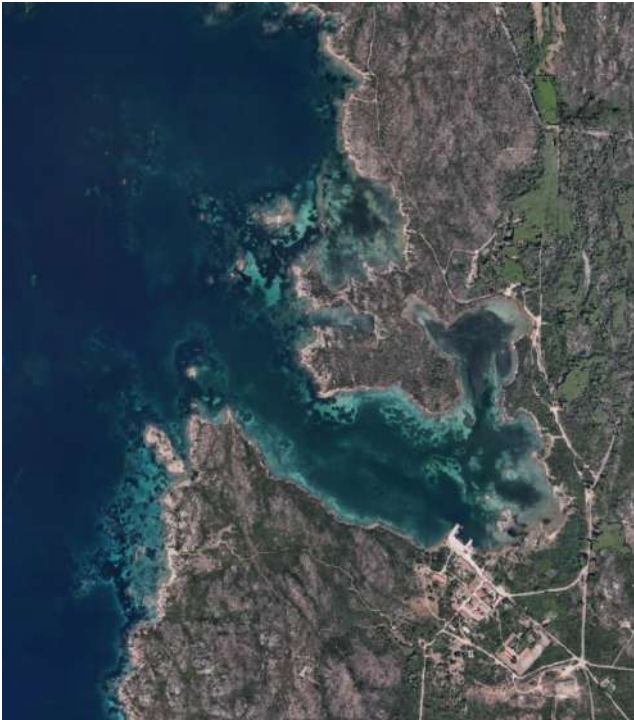
PORTO PALMA

Porto Palma is a very wide bay that offers very good shelter from NE winds, to the west stands Monte Fico and to the east Punta Rossa. Near the beach, continuing in the direction of Punta Coda, you can find Caprera Sailing Center, founded in 1967 by the Milanese section of the Italian Naval League and the Italian Touring Club.

PARK PERMIT REQUIRED FOR NAVIGATION IN THE PARK AREA.



 ANCHORAGE NAME	PORTO PALMA - CAPRERA	 SEABOTTOM	SAND AND ROCKS
 COORDINATES	41°11'18.9"N 9°27'02.1"E	 FACILITIES TO LAND ASHORE	YES, SAILING SCHOOL DOCK
 HIGHLIGHTS	NATURAL BEAUTY	 FACILITIES ASHORE	NONE
 SHELTERED FROM	N - NE - E WINDS	 CLOSEST DROP-OFF POINT	CALA CAPRA
 LIMITS AND PROHIBITIONS	NATURAL MARINE PARK RESTRICTIONS	 NEAREST COASTGUARD STATION	LA MADDALENA





LA MADDALENA AREA

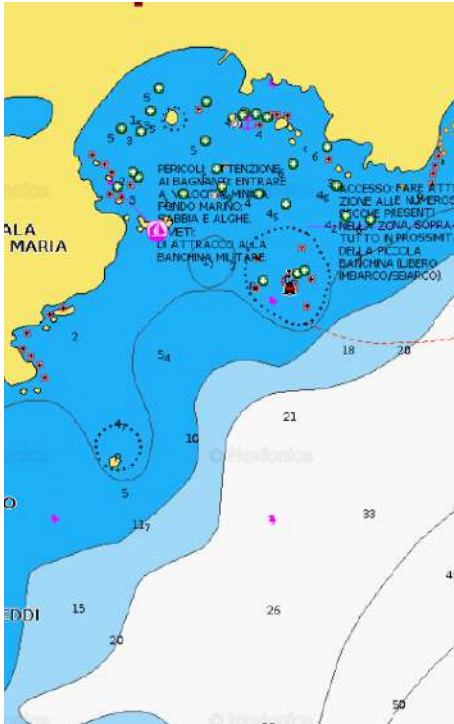
CALA SANTA MARIA

Santa Maria, together with the other two beautiful islets of Razzoli and Budelli, represents the northernmost part of the Maddalena archipelago park. The islet has an area of two square kilometers, while the perimeter of its rugged coastline measures ten kilometers. The characteristic that distinguishes it from the other smaller Maddalena islands is that of being the only one permanently inhabited, obviously beyond its older 'sister' La Maddalena. Santa Maria bay is composed of fine white sand, bathed by the pristine sea, rich in marine fauna. 200 meters long, it is the largest beach in the entire archipelago. Its shallow and sandy bottom sloping towards the open sea forms a splendid natural pool. The cove is surrounded by pink-toned rocks covered in Mediterranean green. Behind the bay extends a lake of brackish water, the Marsh, habitat of numerous species of water birds: woodcocks, hen, mallards. The famous Restaurant La Casitta is on the island.

PARK PERMIT REQUIRED FOR NAVIGATION IN THE PARK AREA.



ANCHORAGE NAME	CALA SANTA MARIA - SANTA MARIA ISLAND	SEABOTTOM	SAND
COORDINATES	41° 17' 37.453" N 9° 22' 19.240" E	FACILITIES TO LAND ASHORE	NO
HIGHLIGHTS	NATURAL BEAUTY	FACILITIES ASHORE	NONE
SHELTERED FROM	NW WIND	CLOSEST DROP-OFF POINT	PALAU
LIMITS AND PROHIBITIONS	NATURAL MARINE PARK RESTRICTIONS	NEAREST COASTGUARD STATION	LA MADDALENA





LA MADDALENA AREA

CALA LUNGA

Cala Lunga bay is located in an inlet in the southern part of the island of Razzoli and its beach is characterized by a very white and thin sand and a limpid and crystalline sea. The landscape surrounding the beach is mainly made up of granite rocks and Mediterranean scrub. The beach can be reached only by sea. Beware of rocks outcropping at the port entrance. Remain at the center of the passage. The depth is 2 to 4 m.

PARK PERMIT REQUIRED FOR NAVIGATION IN THE PARK AREA.



ANCHORAGE NAME

CALA LUNGA - RAZZOLI ISLAND



SEABOTTOM

SAND



COORDINATES

41° 17' 59" N
9° 20' 39" E



FACILITIES TO LAND ASHORE

NO



HIGHLIGHTS

LA CASITTA RESTAURANT IN
SANTA MARIA ISLAND



FACILITIES ASHORE

NONE



SHELTERED FROM

S - SE - E WINDS



CLOSEST DROP-OFF POINT

PALAU



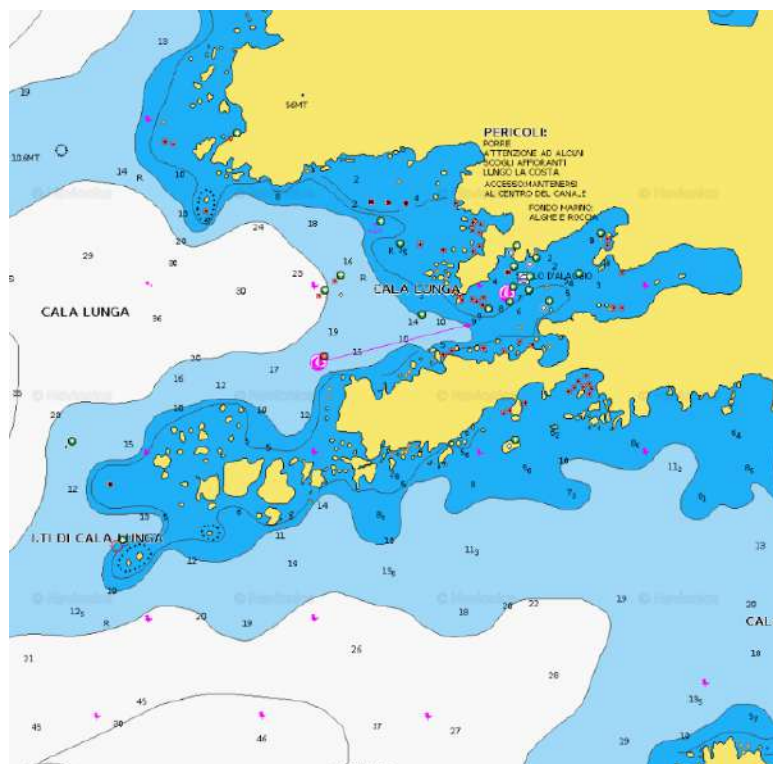
LIMITS AND PROHIBITIONS

NATURAL MARINE PARK
RESTRICTIONS



NEAREST COASTGUARD STATION

LA MADDALENA





LA MADDALENA AREA

PORTO DELLA MADONNA

Known as well as 'Manto della Madonna' (Virgin's mantle), an amazing natural reflecting pool of an almost impossible blue located on the Eastern part of Budelli Island, in front of the wonderful bays of Santa Maria and Razzoli Islands. The name comes from the incredibly transparent and intense blue waters of this sea stretch: one of the most enchanting places in La Maddalena Archipelago. It is a marvellous cove of light, impalpable sand, embraced by golden and pink rocks covered by the scented Mediterranean scrub. Behind the beach there is a pond populated by little egrets, herons, coots and mallard ducks. A lunch in La Casitta restaurant will complete with an absolute luxury experience.

PARK PERMIT REQUIRED FOR NAVIGATION IN THE PARK AREA.



 ANCHORAGE NAME

CALA DELLA MADONNA - BUDELLI, RAZZOLI, SANTA MARIA ISLANDS

 SEABOTTOM

SAND AND SEAWEED

 COORDINATES

41°17'29.71"N
9°21'2.61"E

 FACILITIES TO LAND ASHORE

FORBIDDEN TO GO ASHORE IN BUDELLI ISLAND

 HIGHLIGHTS

NATURAL BEAUTY, LA CASITTA RESTAURANT

 FACILITIES ASHORE

LA CASITTA DOCK IN SANTA MARIA ISLAND

 SHELTERED FROM

ALL WINDS EXCEPT NW AND W

 CLOSEST DROP-OFF POINT

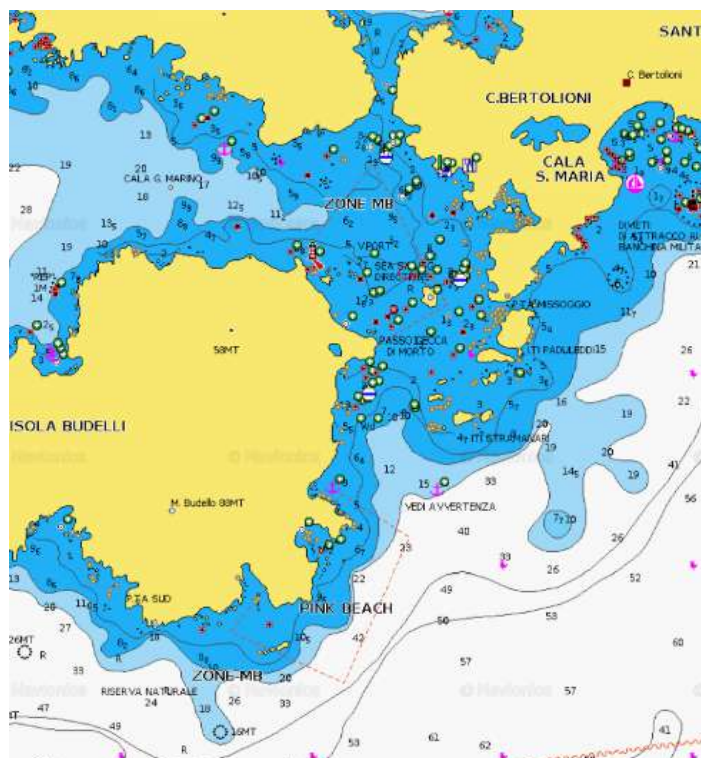
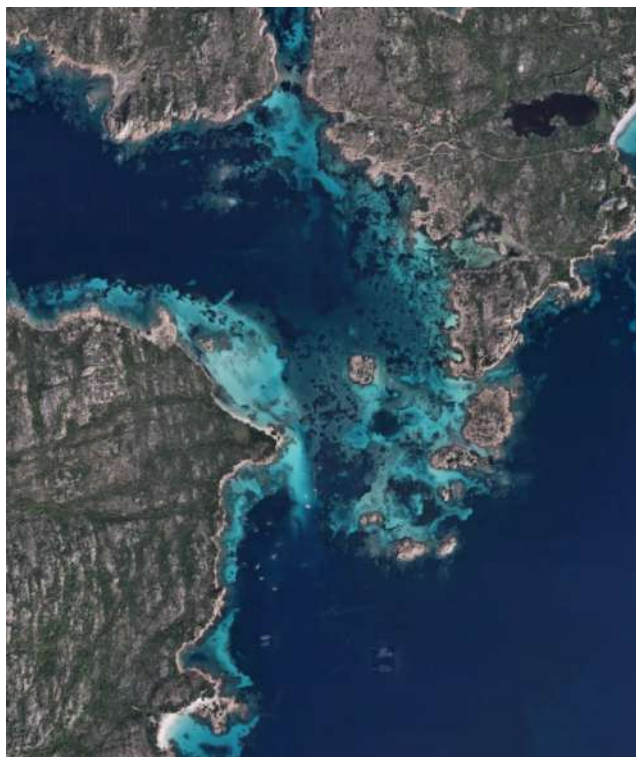
PALAU

 LIMITS AND PROHIBITIONS

NATURAL MARINE PARK RESTRICTIONS

 NEAREST COASTGUARD STATION

LA MADDALENA





NAUTICA ASSISTANCE
YACHT AGENTS & SUPPLIERS

SARDINIA
CORSICA
CARIBBEAN



NA AGENCY

+39 0789 57607 - info@nayacht.com

WWW.NAYACHT.COM



NAUTICA ASSISTANCE
YACHT AGENTS & SUPPLIERS

SARDINIA
CORSICA
CARIBBEAN