



NAUTICA ASSISTANCE  
YACHT AGENTS & SUPPLIERS

SARDINIA  
CORSICA  
CARIBBEAN

SUGGESTED ANCHORAGES



SUGGESTED ANCHORAGES

COSTA SMERALDA SARDINIA





**NAUTICA ASSISTANCE**  
YACHT AGENTS & SUPPLIERS

SARDINIA  
CORSICA  
CARIBBEAN

## P O R T O   C E R V O   A R E A



### GENERAL RESTRICTIONS

- Navigation within 200 m from the coast
- Anchoring within 200 m from the coast
- 10 knots speed limit within 1 km from the coast
- Running any craft within 200 m from the coast with engines on
- Tying lines to rocks







# PORTO CERVO AREA

## FORTE CAPPELLINI - PHI BEACH

A very special anchorage, facing the South of Caprera island, in the area of Baja Sardinia, where most of our clients are happy to spend time overall during sunset and night time. The anchorage, located right front of Phi Beach club, is perfect for a stop by at the club perhaps after enjoying the Maddalena's park crystalline waters during the day. The spot gives a great chance to enjoy a drink or a dinner with an amazing sunset on the sea and a spectacular view on the Maddalena's archipelago. Phi Beach club, definitely an evocative icon of the Emerald Coast's nightlife, is an open air club located near the military outpost of Forte Cappellini, that, in the XIX century, was an important fortress dedicated to the defense of North Sardinia. Protected by enchanting rock formations shaped by the sea, its breathtaking natural position brings the unique experience of one of the most beautiful sunsets of the island.



ANCHORAGE NAME

FORTE CAPPELLINI - PHI BEACH



SEABOTTOM

SAND AND ROCKS



COORDINATES

41°08'33.0"N  
9°27'55.6"E



FACILITIES TO LAND ASHORE

PHI BEACH DOCK



HIGHLIGHTS

PHI BEACH CLUB & RESTAURANT



FACILITIES ASHORE

BEACH BAR, RESTAURANT,  
CLUB, FACILITIES



SHELTERED FROM

S - SE - SW WINDS



CLOSEST DROP-OFF POINT

PHI BEACH DOCK FOR GUESTS

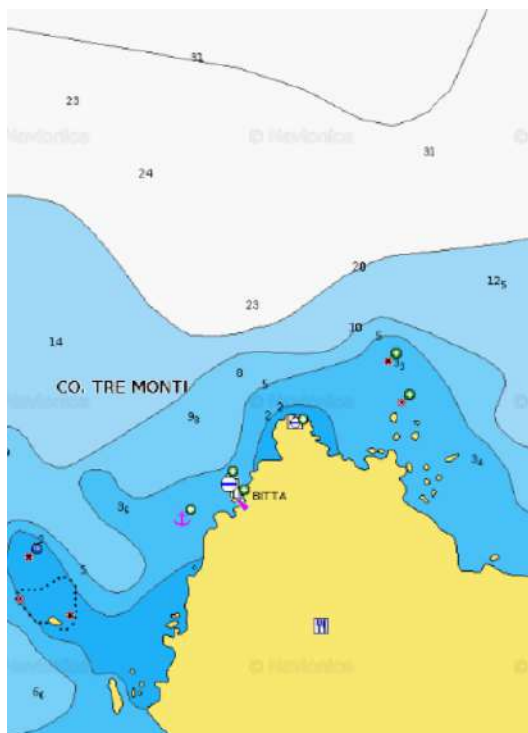


LIMITS AND PROHIBITIONS NO FURTHER RESTRICTIONS



NEAREST COASTGUARD STATION

PALAU



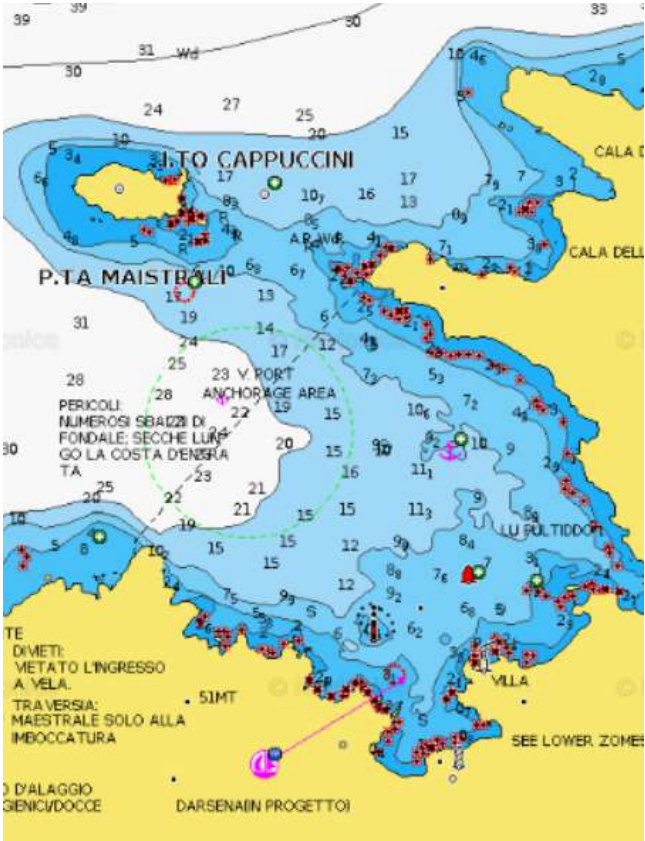
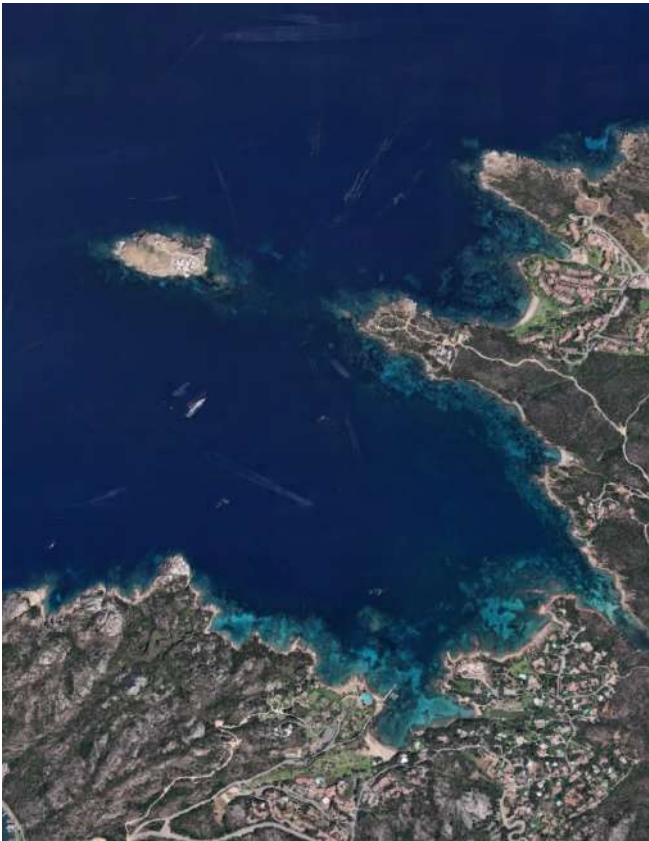
# PORTO CERVO AREA

## LISCIA DI VACCA - PITRIZZA BAY

Beautiful anchorage facing the famous Pitrizza Hotel. The whiteness and brightness of the sand and the typical vivid colours of the Costa Smeralda sea will give you breathtaking views. In the bay you will find a concrete dock suitable for guests and goods pick up/drop offs. Protected from S, SW, SE winds and also NE wind deep inside you can easily spend some good time in this bay with Poltu Quatu and Porto Cervo just around the corner.



 ANCHORAGE NAME	LISCIA DI VACCA - PITRIZZA BAY	 SEABOTTOM	SAND AND ROCKS
 COORDINATES	41°08'31.9"N 9°30'34.8"E	 FACILITIES TO LAND ASHORE	PITRIZZA CONCRETE DOCK
 HIGHLIGHTS	PITRIZZA HOTEL	 FACILITIES ASHORE	BEACH BAR, RESTAURANT, FACILITIES
 SHELTERED FROM	SW - S - SE - NE - E WINDS	 CLOSEST DROP-OFF POINT	PITRIZZA CONCRETE DOCK
 LIMITS AND PROHIBITIONS	NO FURTHER RESTRICTIONS	 NEAREST COASTGUARD STATION	PALAU





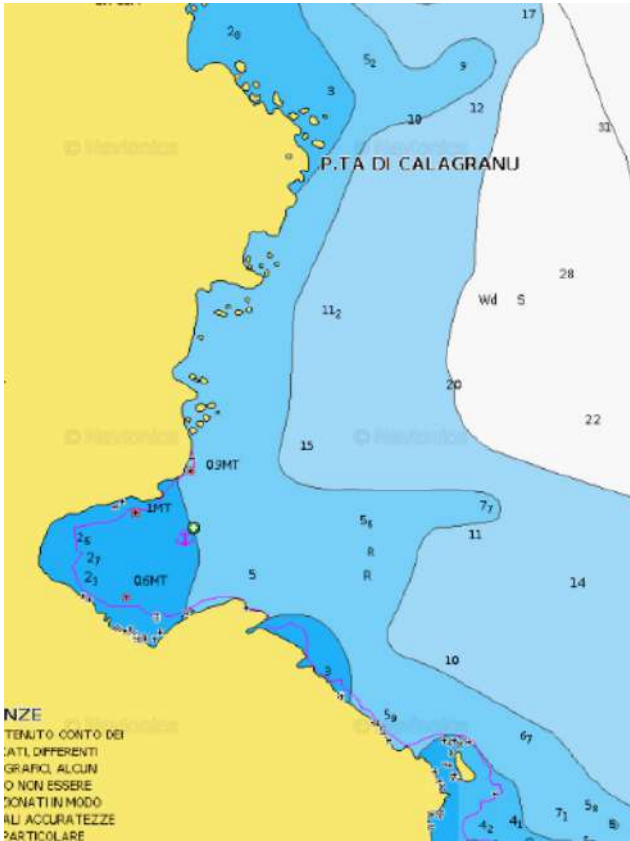
# PORTO CERVO AREA

## CALA GRANU

Cala Granu, a few steps from Porto Cervo, is an unforgettable water mirror with different shades of emerald green and deep blue. Cala Granu beach lies conveniently close to Porto Cervo Grand Hotel and its beach. It is sheltered from the westerly winds. Ideal for families and for those who love tranquility.



 ANCHORAGE NAME	CAL A GRANU	 SEABOTTOM	SAND
 COORDINATES	41°08'46.1"N 9°31'44.3"E	 FACILITIES TO LAND ASHORE	NO
 HIGHLIGHTS	NATURAL BEAUTY	 FACILITIES ASHORE	BEACH BAR, FACILITIES
 SHELTERED FROM	NW - W - SW WINDS	 CLOSEST DROP-OFF POINT	PORTO CERVO FUEL DOCK
 LIMITS AND PROHIBITIONS	NO FURTHER RESTRICTIONS	 NEAREST COASTGUARD STATION	PORTO CERVO



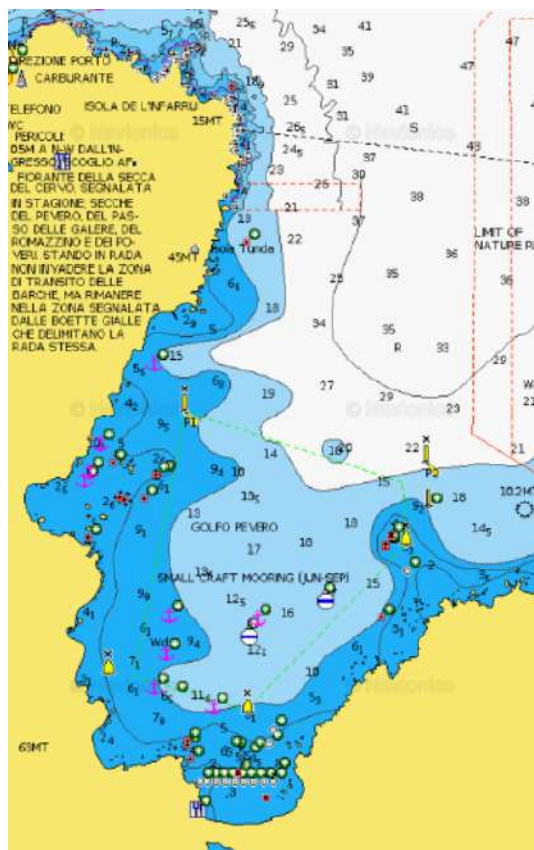
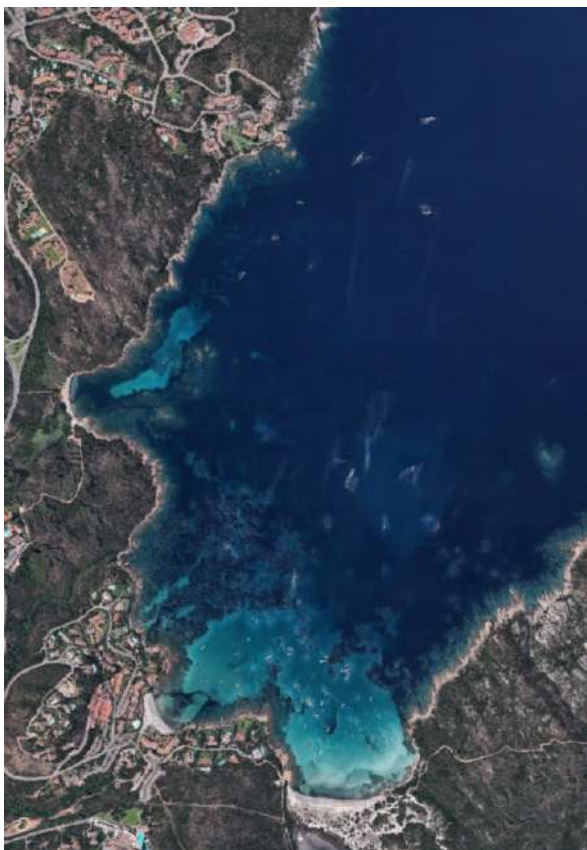
## PORTO CERVO AREA

## PEVERO BAY

Beautiful spot with crystal clear water, white sand. Mooring field in the South of the bay, but free anchorage in the North part. It offers protection from E, SE, S, SW, W, NW but open to NE; the bottom is sandy in the internal part and rocky with seaweeds in the first part of the gulf. With W winds the best refuge is located near the coast, facing Cala Romantica. To access the beach there is a launching corridor, therefore once on the beach there is no easy access to the road. A Beach restaurant available ashore.



 ANCHORAGE NAME	PEVERO BAY	 SEABOTTOM	SAND, ROCK AND SEAWEED
 COORDINATES	41°07'33.6"N 9°32'58.7"E	 FACILITIES TO LAND ASHORE	LAUNCH CORRIDOR
 HIGHLIGHTS	NATURAL BEAUTY, BUOY CAMP	 FACILITIES ASHORE	BEACH BAR, FOX MOORING BUOY CAMP
 SHELTERED FROM	E - SE - S - SW - W - NW WINDS	 CLOSEST DROP-OFF POINT	PORTO CERVO FUEL DOCK
 LIMITS AND PROHIBITIONS	BUOY FIELD	 NEAREST COASTGUARD STATION	PORTO CERVO





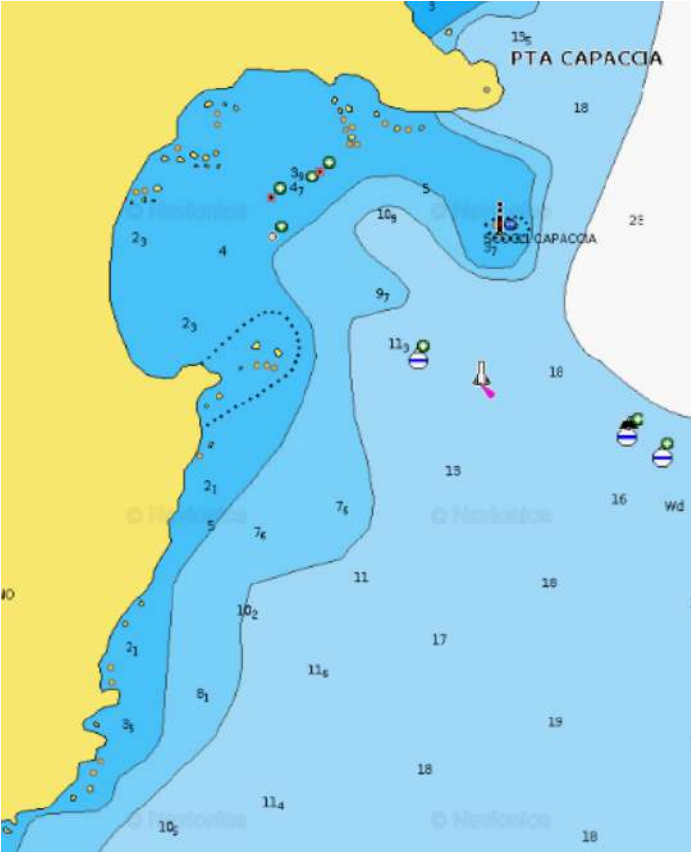
# PORTO CERVO AREA

## ROMAZZINO BAY

Between emerald waters and verdant scented gardens, lies the Hotel Romazzino, a whitewashed building gently resting on a lengthy beach of the finest sand. The bay, one of the most beautiful spots in Costa Smeralda, is the perfect corner that merges the beauty of the nature with the charme that Romazzino Hotel can offer. The usage of the hotel pontoon is subject to Hotel authorization.



 ANCHORAGE NAME	ROMAZZINO BAY	 SEABOTTOM	SAND
 COORDINATES	41°05'52.7"N 9°34'03.2"E	 FACILITIES TO LAND ASHORE	YES, ROMAZZINO HOTEL DOCK
 HIGHLIGHTS	ROMAZZINO HOTEL	 FACILITIES ASHORE	BEACH BAR, RESTAURANT, HOTEL, FACILITIES
 SHELTERED FROM	N - NW - W WINDS	 CLOSEST DROP-OFF POINT	ROMAZZINO HOTEL DOCK
 LIMITS AND PROHIBITIONS	NO FURTHER RESTRICTIONS	 NEAREST COASTGUARD STATION	PORTO CERVO







**NAUTICA ASSISTANCE**  
YACHT AGENTS & SUPPLIERS

SARDINIA  
CORSICA  
CARIBBEAN

# PORTO ROTONDO AREA



## GENERAL RESTRICTIONS

- Navigation within 200 m from the coast
- Anchoring within 200 m from the coast
- 10 knots speed limit within 1 km from the coast
- Running any craft within 200 m from the coast with engines on
- Tying lines to rocks







# PORTO ROTONDO AREA

## CUGNANA BAY

Cugnana Gulf, one of the most popular anchorage for yachts during mistral! Cugnana Gulf, registered as GOLFO DI CONGIANUS in nautical map, it is a picturesque bay and a real natural port, that goes from Punta Capriccioli (North) to Capo Figari (South), including also the islands of Mortorio and Soffi belonging to Maddalena's national park, at the bottom of Cugnana, granite massif that reaches the height of 650m. The gulf offers a valid protection to vessels from the main winds of the area, making this bay one of the safest anchorages between Poltu Quatu and Golfo Aranci. Check out the depth though! In this information sheet we will consider the part of Cugnana gulf that goes from Razza di Junco to Punta Volpe. Beside offering a perfect anchorage during adverse weather conditions, the bay doesn't have any particular restriction so it is the perfect spot for water sports (watch out the traffic!) and also a logistic great solution for guests pick up and drop off not too far from the airport, thanks to the facilities given by the beautiful ports and marinas located along this area like Porto Rotondo, Portisco, Cala dei Sardi.



ANCHORAGE NAME

CUGNANA BAY



SEABOTTOM

SAND AND SEAWEED



COORDINATES

41° 2'11.23"N  
9° 31'55.57"E



FACILITIES TO LAND ASHORE

YES, PORTISCO, PORTO  
ROTONDO, CALA DEI SARDI



HIGHLIGHTS

NATURAL BEAUTY, LOGISTIC POINT



FACILITIES ASHORE

BEACH BAR, FACILITIES



SHELTERED FROM

NW - SW - W WINDS



CLOSEST DROP-OFF POINT

PORTISCO, CALA DEI SARDI,  
PORTO ROTONDO

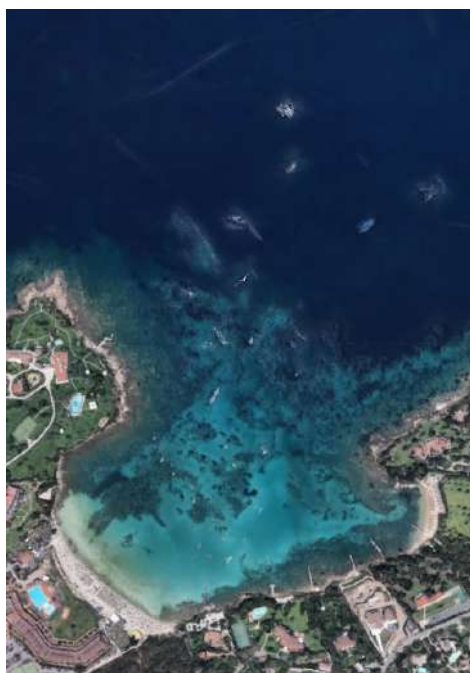


LIMITS AND PROHIBITIONS NO FURTHER RESTRICTIONS



NEAREST COASTGUARD STATION

PORTO ROTONDO





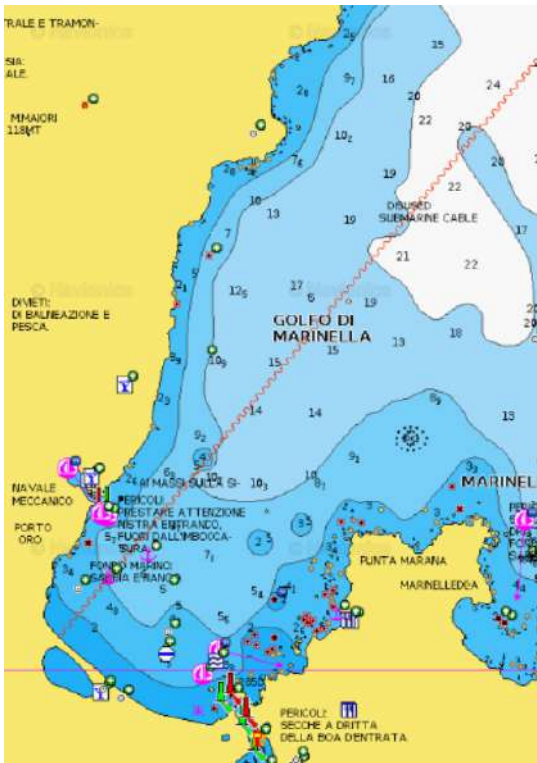
# PORTO ROTONDO AREA

## GULF OF MARINELLA

Situated in between Porto Rotondo and Golfo Aranci, Marinella bay offers a white sandy beach, fully equipped with tender and toy rental, beach bar and restaurants with a length of about 800 meters. It's the largest beach you'll find in this pocket of the Emerald Coast. Facing North-East, you can see the islands of Soffi and Mortorio 8 kilometers off the coast. Although there are several beach hotels spread around the area, Marinella's beach itself is backed by Mediterranean vegetation, with several trails leading to the beach. The main village of Marinella has its own harbour and yacht club. Marinella's beach is suitable for families with children, and protected from W winds. Marinella bay doesn't have any restrictions for watersports.



 ANCHORAGE NAME	GULF OF MARINELLA	 SEABOTTOM	SAND
 COORDINATES	41° 0'53.54"N 9°33'50.87"E	 FACILITIES TO LAND ASHORE	YES, LAUNCHING CORRIDOR
 HIGHLIGHTS	WATERSPORTS, BLU BEACH CLUB, IL REGOLO	 FACILITIES ASHORE	BEACH BAR, FACILITIES, RESTAURANT
 SHELTERED FROM	NW - W - SW - S - SE WINDS	 CLOSEST DROP-OFF POINT	PORTO ORO
 LIMITS AND PROHIBITIONS	NO FURTHER RESTRICTIONS	 NEAREST COASTGUARD STATION	PORTO ROTONDO





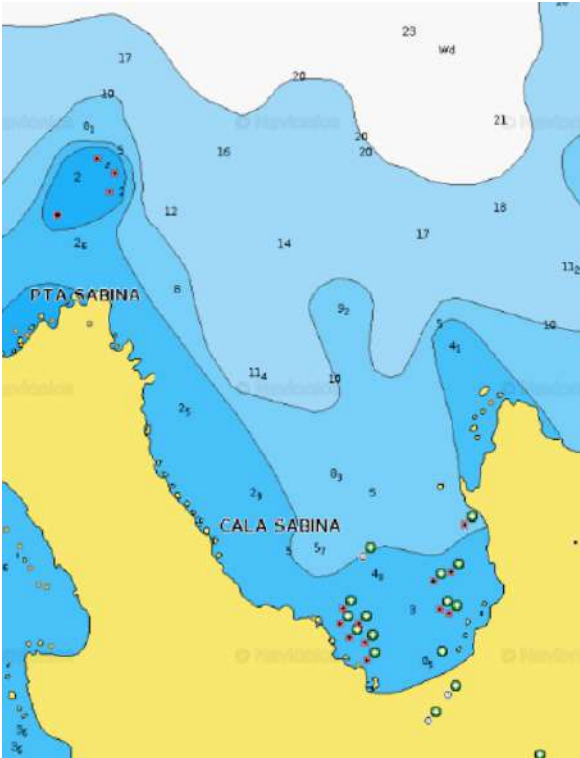
# PORTO ROTONDO AREA

## CALA SABINA

Cala Sabina beach (Spiaggia di Cala Sabina) is located in the Golfo Aranci area, along the railroad track that leads to the village. The train passes Stazione Cala Sabine three or four times a day. This Caribbean style beach is surrounded by Mediterranean greenery and juniper trees, faces north-west, offering a fabulous view of the emerald sea. Cala Sabina beach has a restaurant serving lunch and dinner, and from 18.00, the bar serves appetizers, and often a DJ plays at night to add to the atmosphere while you are dining on the beach. Due to its rise in popularity, Cala Sabina beach can get crowded in August, and is best visited in the early morning. Thanks to sandy low sea bottoms, the bay is an ideal destination for families with kids since children can safely play, bathe and have fun here.



 ANCHORAGE NAME	CALA SABINA	 SEABOTTOM	SAND
 COORDINATES	41°00'49.9"N 9°34'57.7"E	 FACILITIES TO LAND ASHORE	NO
 HIGHLIGHTS	NATURAL BEAUTY, BEACH BAR & RESTAURANT	 FACILITIES ASHORE	BEACH BAR, FACILITIES
 SHELTERED FROM	W - SW - S - SE WINDS	 CLOSEST DROP-OFF POINT	PUNTA MARANA OR PORTO ORO
 LIMITS AND PROHIBITIONS	NO FURTHER RESTRICTIONS	 NEAREST COASTGUARD STATION	PORTO ROTONDO







**NAUTICA ASSISTANCE**  
YACHT AGENTS & SUPPLIERS

SARDINIA  
CORSICA  
CARIBBEAN



NA AGENCY

+39 0789 57607 - [info@nayacht.com](mailto:info@nayacht.com)

[WWW.NAYACHT.COM](http://WWW.NAYACHT.COM)



**NAUTICA ASSISTANCE**  
YACHT AGENTS & SUPPLIERS

SARDINIA  
CORSICA  
CARIBBEAN